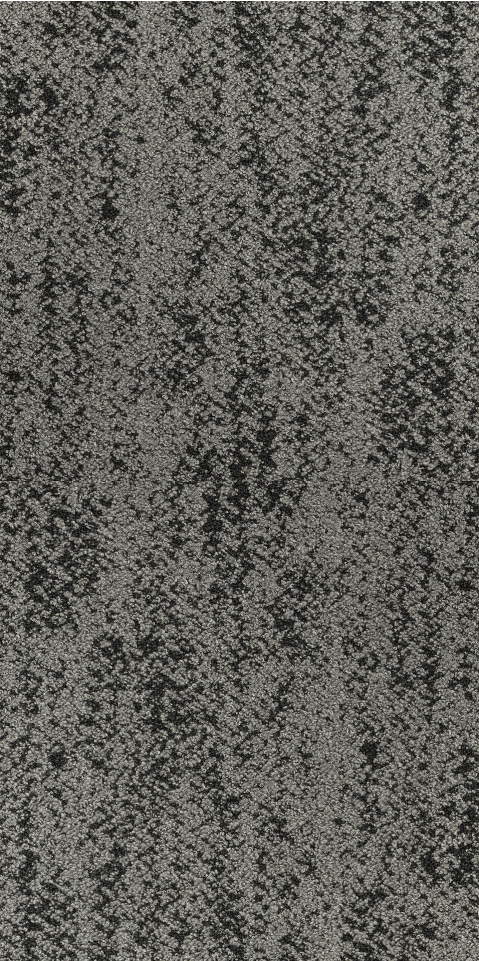


Clawson Middle School

Finishes & Furniture Presentation

<p>MAIN PAINT SHERWIN WILLIAMS FIRST STAR SW 7646</p>	<p>HALLWAY PAINT SHERWIN WILLIAMS TINSMITH SW 7657</p>	<p>DOOR FRAME PAINT SHERWIN WILLIAMS STAMPED CONCRETE SW 7655</p>	<p>ACCENT PAINT SHERWIN WILLIAMS CHEERFUL SW 6903</p>	<p>ACCENT & DOOR FRAME PAINT SHERWIN WILLIAMS HONORABLE BLUE SW 6811</p>
--	---	--	--	---



MAIN CARPET
TARKETT
SHEARED HERRINGBONE – GHOST WRITER



ACCENT CARPET
TARKETT
Twill – INDIGO RUN



WALK OFF CARPET
TARKETT
ASSERTIVE ACTION - CHROMIUM



MAIN VINYL BASE
TARKETT
GREY



HALLWAY VINYL BASE
TARKETT
MIDNIGHT



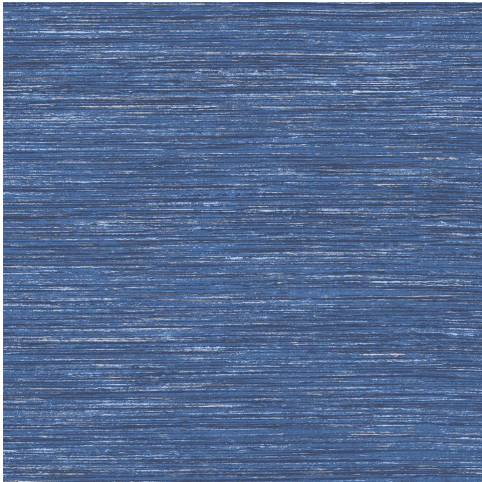
COLORED LVT
TARKETT
CONTOUR, COLOR BEAM - MOONLIGHT



COLORED LVT
TARKETT
CONTOUR, COLOR BEAM – MANTA GREY



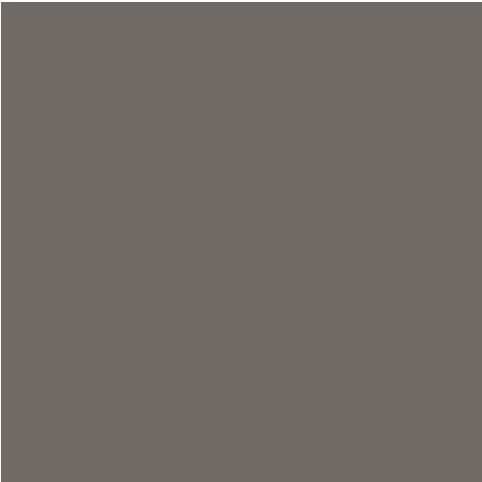
COLORED LVT
TARKETT
CONTOUR, COLOR BEAM – STRAW



COLORED LVT
TARKETT
CONTOUR, COLOR BEAM – JUNIPER



WOOD LVT
TARKETT
CRAFTED PLANK – PALE CYPRESS



VINYL STAIR TREADS
TARKETT
GREY



BATHROOM TILE (FLOORS & WALLS)
CROSSVILLE
COLOR MINGLE – GRAY CS



CLASSROOM/BATHROOM CABINETRY LAMINATE
FORMICA
PLANKED URBAN OAK



CLASSROOM/BATHROOM COUNTERTOP LAMINATE
WILSONART
FASHION GRAY

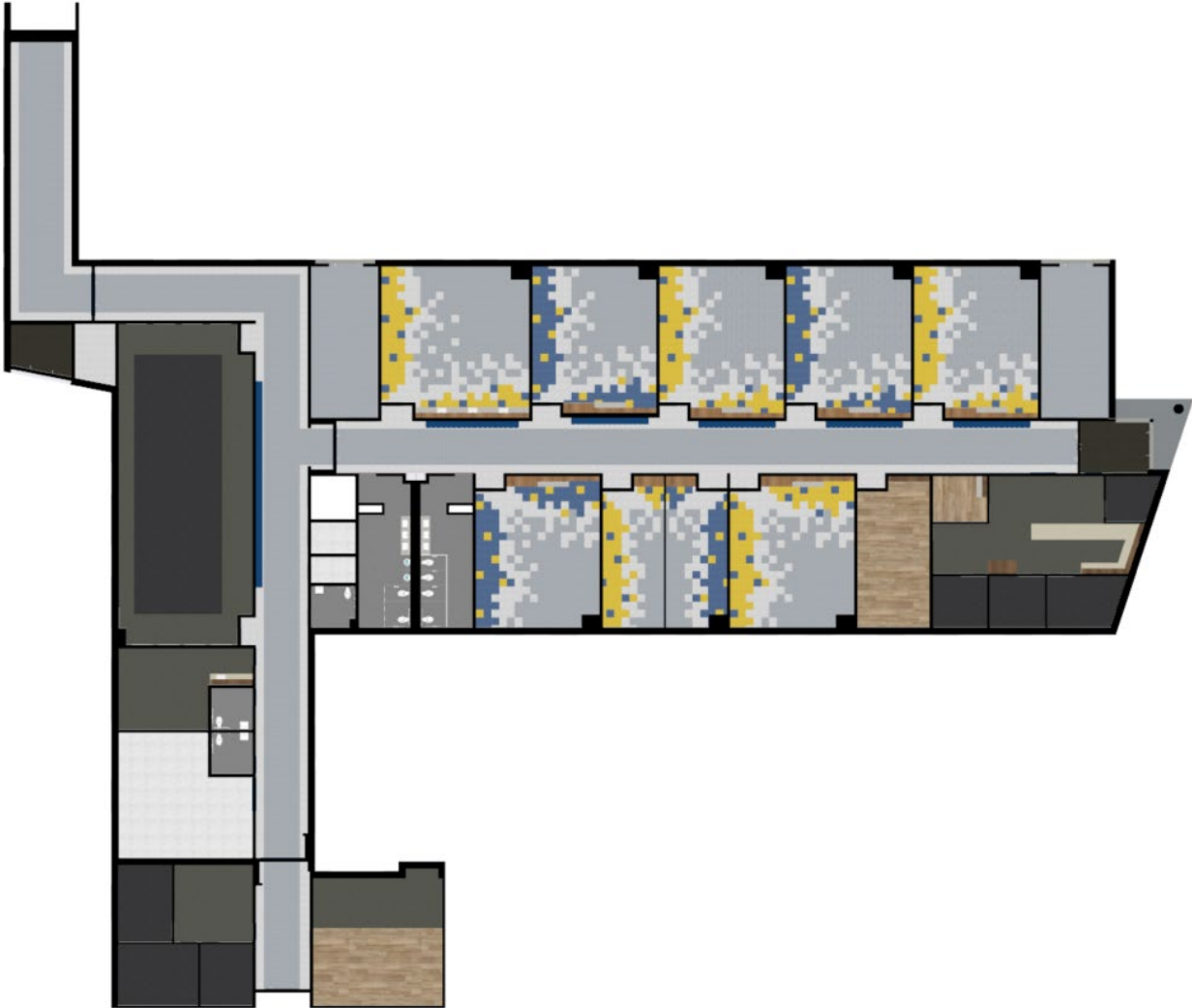


FRONT OFFICE CABINETRY LAMINATE
FORMICA
PLANKED COFFEE OAK

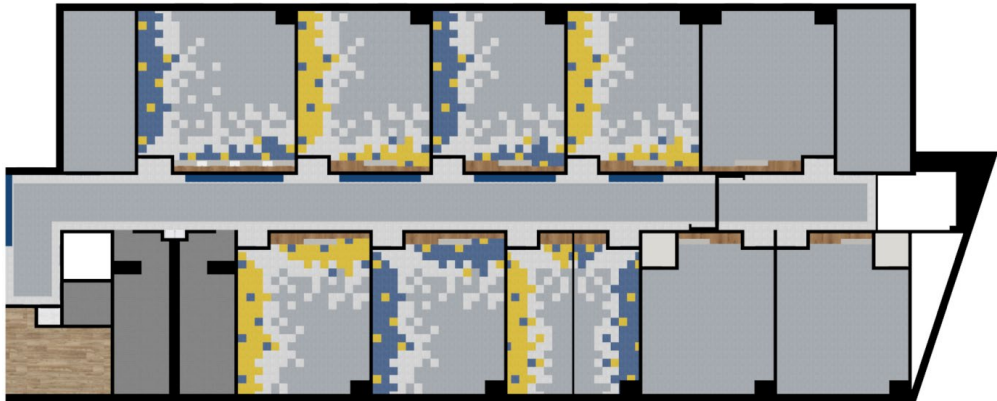


FRONT OFFICE COUNTERTOP LAMINATE
WILSONART
SIERRA CASCADE

FIRST FLOOR:



SECOND FLOOR:





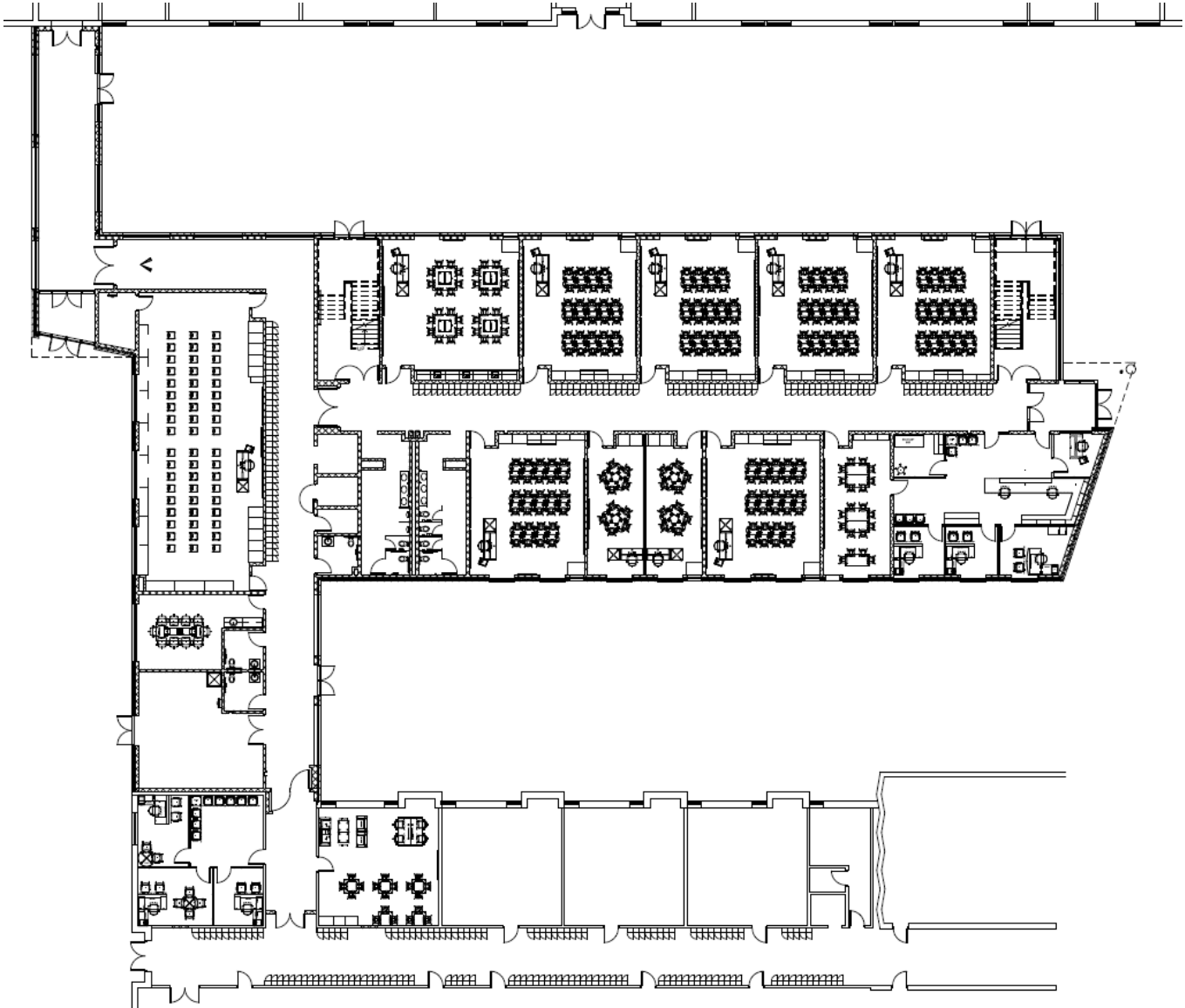


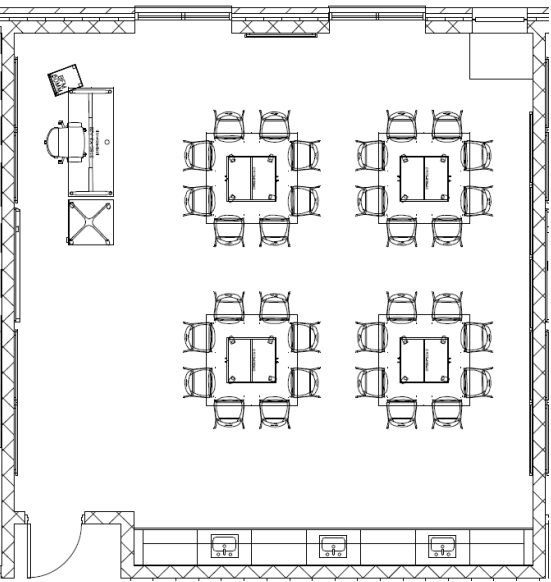












TEACHER DESK
MIEN – MY OFFICE
DESK TO COME WITH CASTERS



TEACHER CHAIR
9TO5 SEATING – NEO



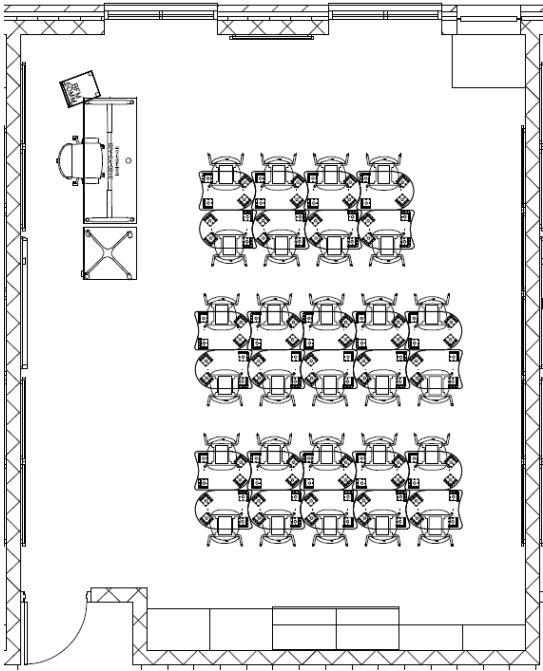
STUDENT CHAIR
MIEN – FFL



STUDENT SEATED HEIGHT TABLE
MIEN – CRE8



MOBILE PED W/ CUSHION
GLOBAL – 1900 SERIES



TEACHER DESK
MIEN – MY OFFICE
DESK TO COME WITH CASTERS



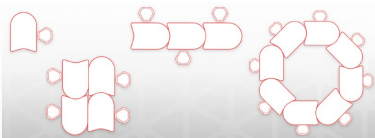
TEACHER CHAIR
9TO5 SEATING – NEO



STUDENT CHAIR
MIEN – FFL



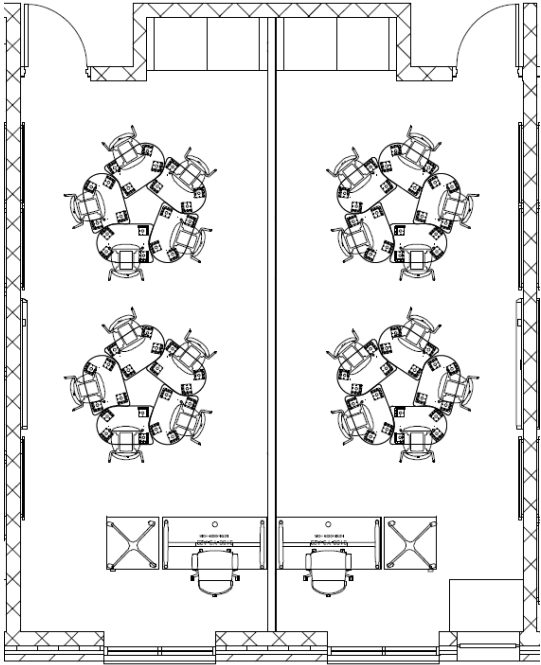
STUDENT DESK
MIEN – PAL LINC



STUDENT DESK LAYOUTS



MOBILE PED W/ CUSHION
GLOBAL – 1900 SERIES



TEACHER DESK
MIEN – MY OFFICE
DESK TO COME WITH CASTERS



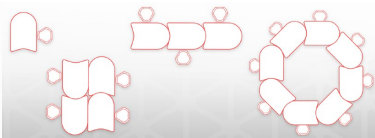
TEACHER CHAIR
9TO5 SEATING – NEO



STUDENT CHAIR
MIEN – FFL



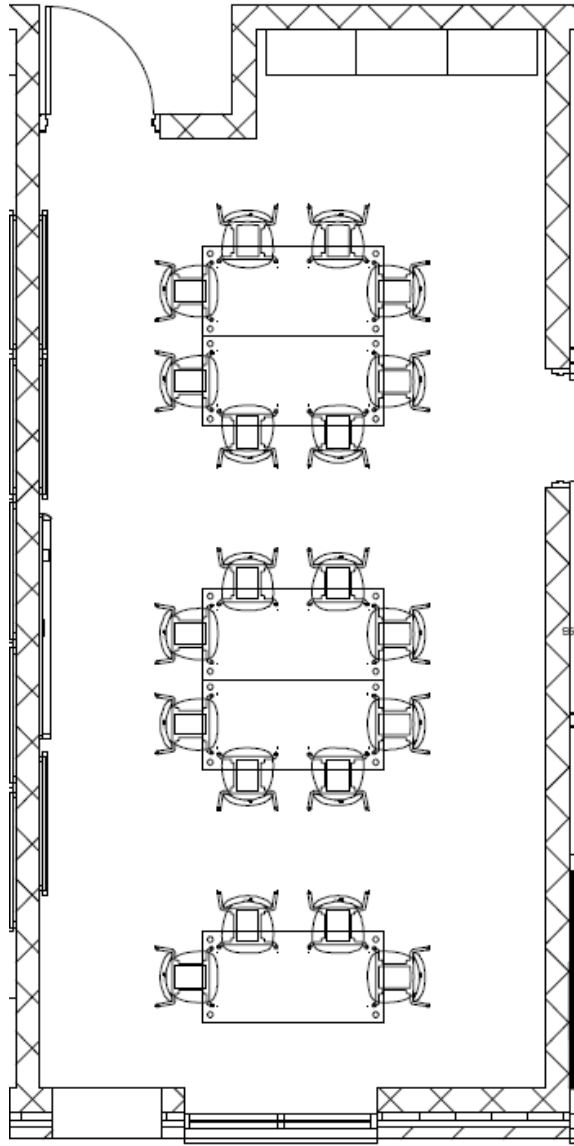
STUDENT DESK
MIEN – PAL LINC



STUDENT DESK LAYOUTS



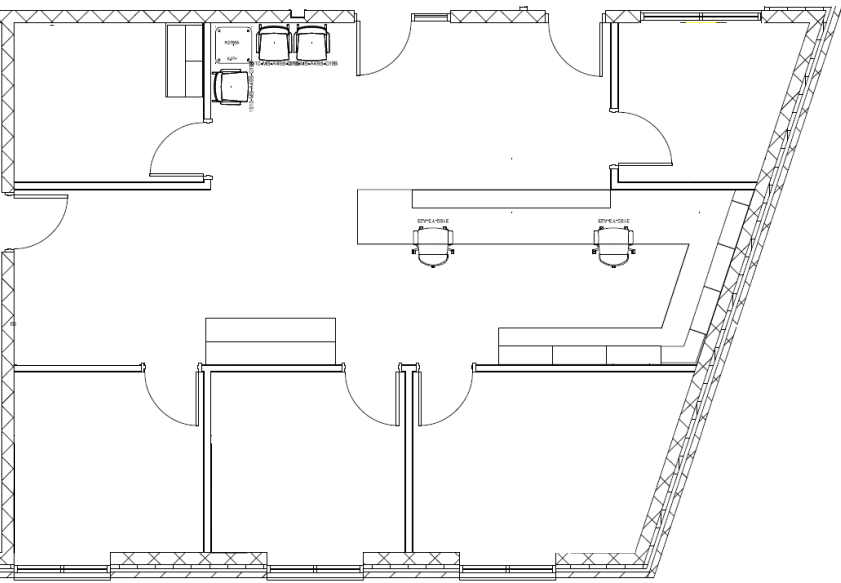
MOBILE PED W/ CUSHION
GLOBAL – 1900 SERIES



FLIP-TOP TABLE
MIEN – DIAL



CHAIR
MIEN – FFL



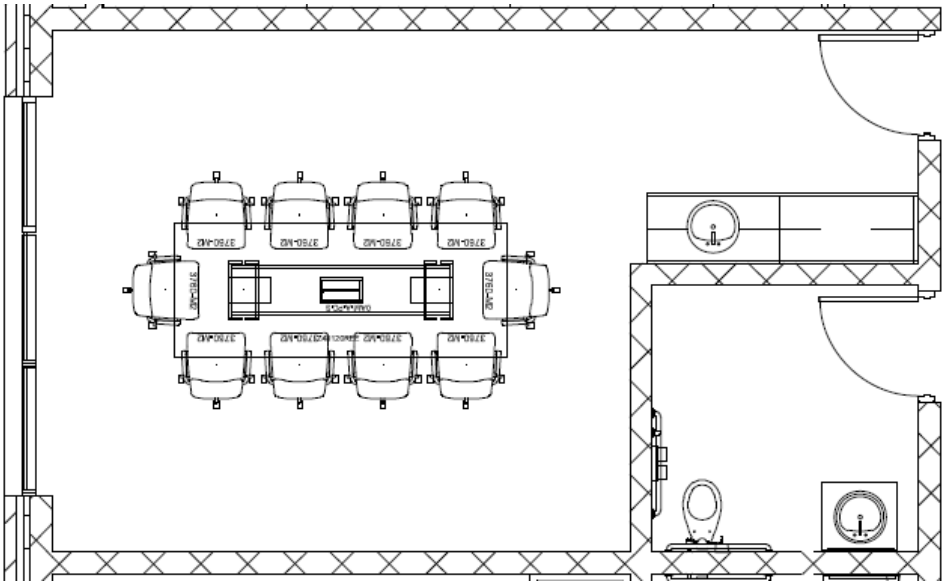
GUEST CHAIR
9TO5 SEATING – CLARY



SIDE TABLE
GLOBAL – RIVER+



TASK CHAIR
9TO5 SEATING – NEO



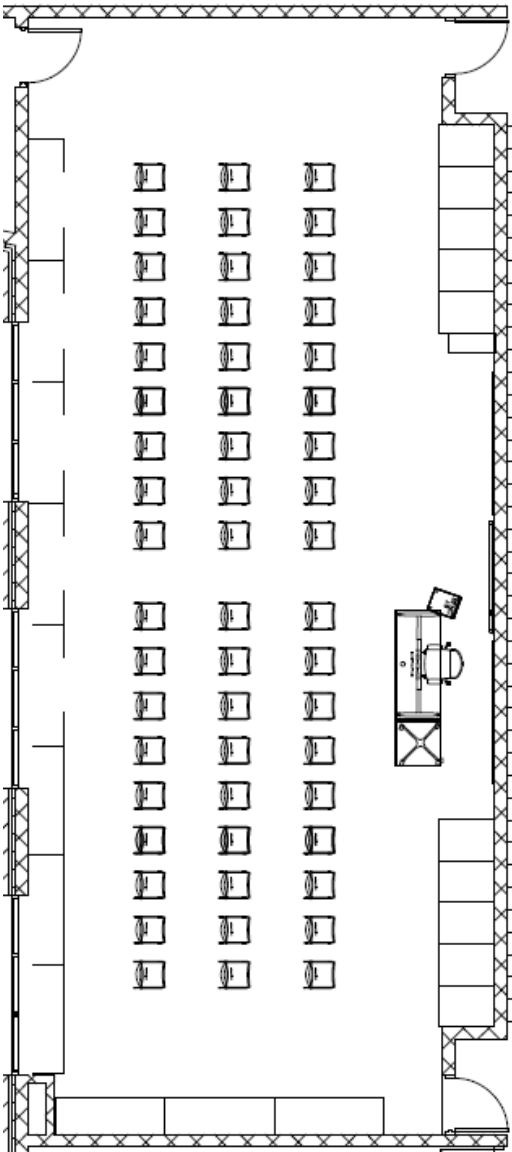
CONFERENCE CHAIR
9TO5 SEATING – MILA



CONFERENCE TABLE
GLOBAL – ZIRA



TABLE POWER
GLOBAL – OASIS MINI



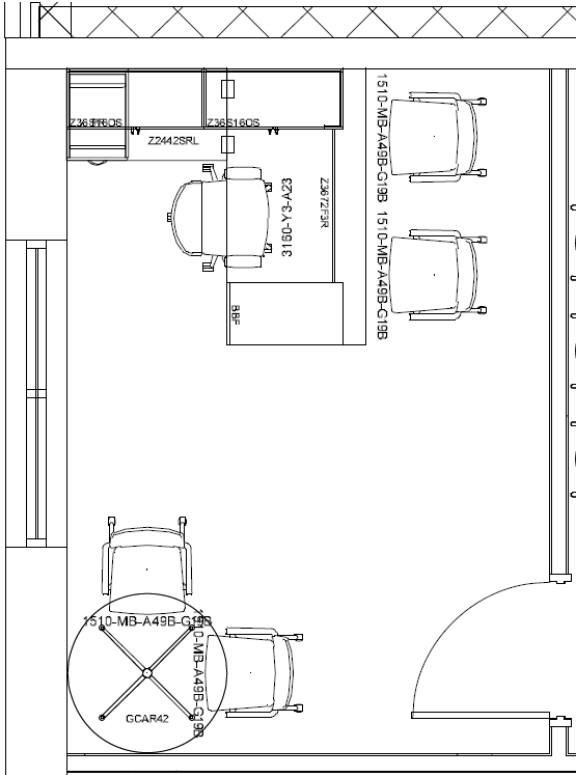
MUSIC CHAIR
MIEN – GMAB2



MOBILE PED W/ CUSHION
GLOBAL – 1900 SERIES



TEACHER DESK
MIEN – MY OFFICE
DESK TO COME WITH CASTERS



GUEST/MEETING CHAIR
9TO5 SEATING – CLARY



TASK CHAIR
9TO5 SEATING – NEO

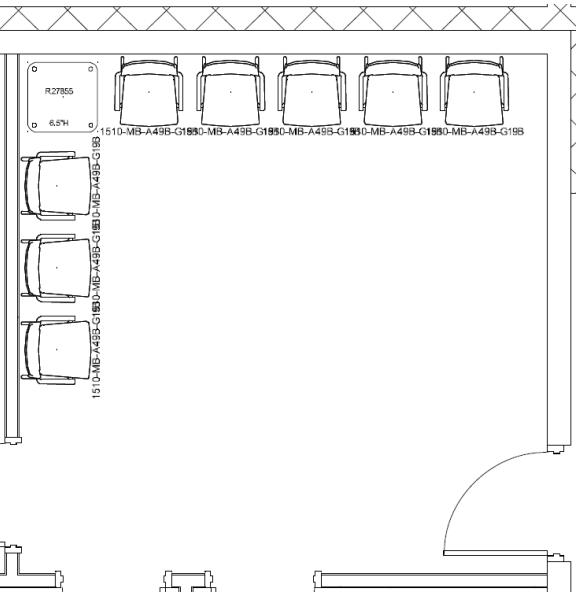
****Example of Product****



DESK
GLOBAL – ZIRA



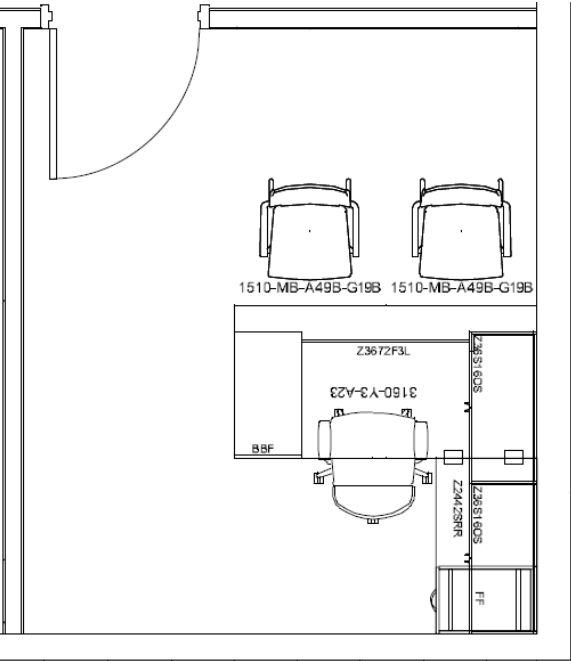
MEETING TABLE
GLOBAL – BOARDROOM



GUEST CHAIR
9TO5 SEATING - CLARY



SIDE TABLE
GLOBAL – RIVER+



GUEST CHAIR
9TO5 SEATING – CLARY

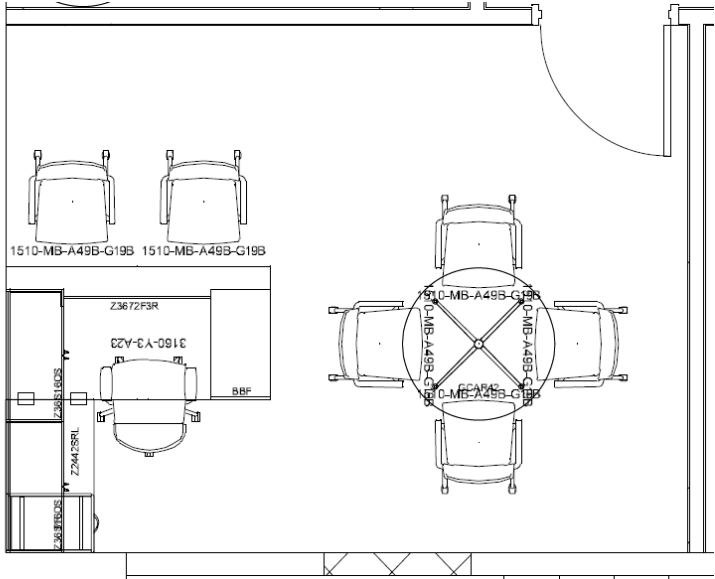


TASK CHAIR
9TO5 SEATING – NEO

****Example of Product****



DESK
GLOBAL – ZIRA



GUEST/MEETING CHAIR
9TO5 SEATING – CLARY



TASK CHAIR
9TO5 SEATING – NEO

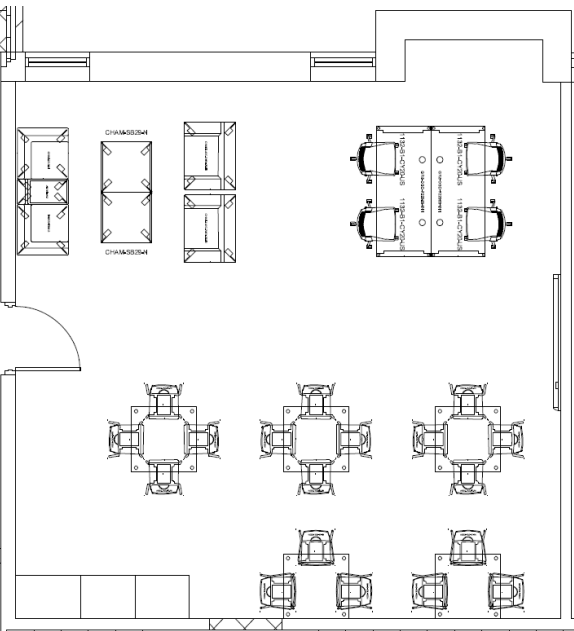
****Example of Product****



DESK
GLOBAL – ZIRA



MEETING TABLE
GLOBAL – BOARDROOM



LOUNGE SEATING
MIEN – CHAMELEON CORNER CHAIR



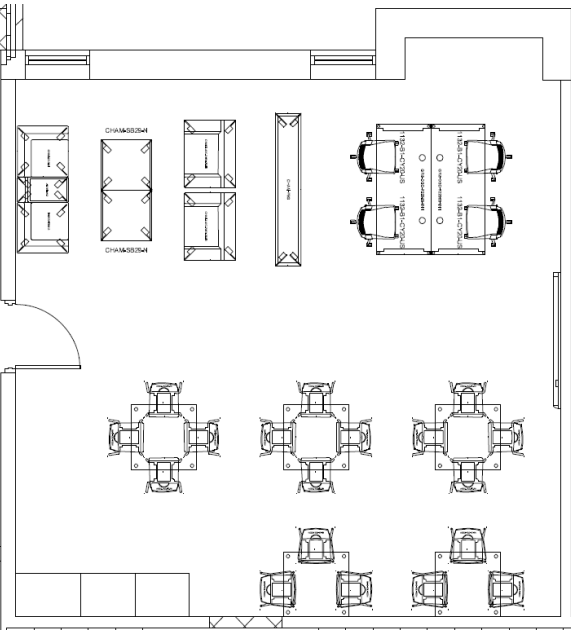
LOUNGE POWER
MIEN – CHAMELEON POWER UNIT



LOUNGE CHAIR
MIEN – CHAMELEON EASY CHAIR



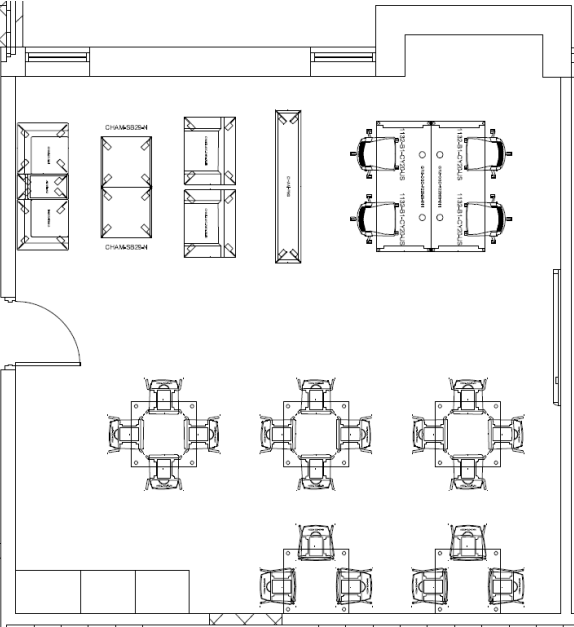
COFFEE TABLE
MIEN – CHAMELEON COFFEE TABLE



COMPUTER TABLE
MIEN – GR8



COMPUTER CHAIR
9TO5 SEATING – DASH



SEATED HEIGHT TABLE
MIEN – DIAL



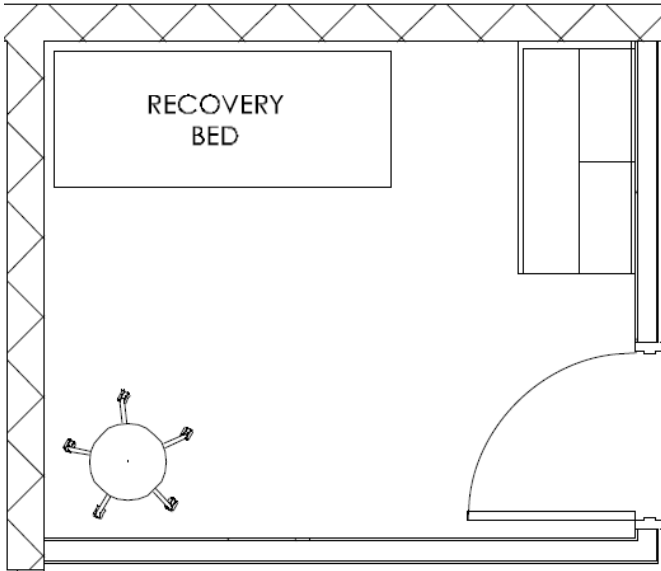
CAFÉ HEIGHT TABLE
MIEN – DIAL



CHAIR
MIEN - WDS



STOOL
MIEN – WDS



RECOVERY BED
SCHOOL HEALTH – PALMER RECOVERY BED



STOOL
GLOBAL – DOCTOR BUDDY



A modern office chair with a grey mesh backrest, a dark blue seat, and black armrests and base. The chair is shown from a side profile, facing right. It has a five-point base with casters.

A dark wood cabinet with a vertical grain pattern and a silver handle.



WAKELY
ASSOCIATES INC./ARCHITECTS



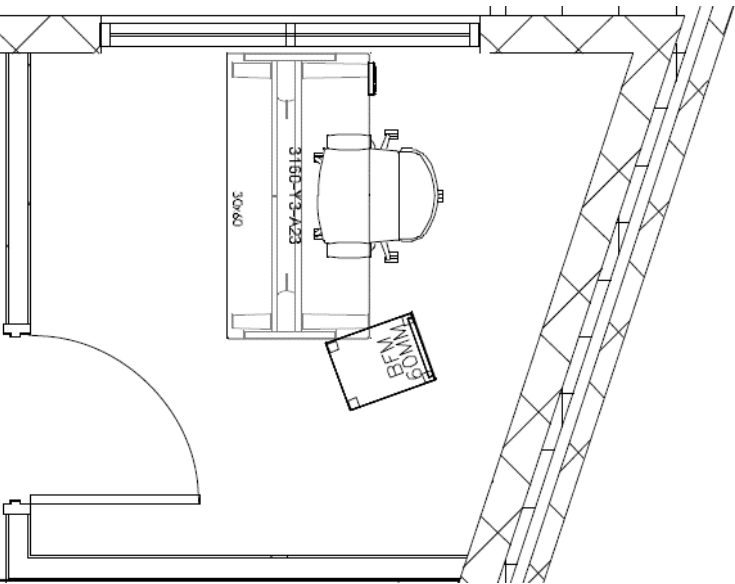


A modern office desk setup featuring a large wooden desk, a white ergonomic chair, a laptop, and a lamp. The desk is integrated into a dark grey modular shelving system with glass-fronted cabinets and open shelving units.

A modern armchair with a grey upholstered backrest and a yellow upholstered seat. The chair has a black metal frame with armrests and four legs. It is shown from a side profile, facing right.



**INTERIOR
IMAGE
INCORPORATED**



SIT-TO-STAND DESK
TOP: GLOBAL – ZIRA
BASE: ESI – TRIUMPH LX



TASK CHAIR
9TO5 SEATING – NEO



MOBILE PED W/ CUSHION
GLOBAL – 1900 SERIES

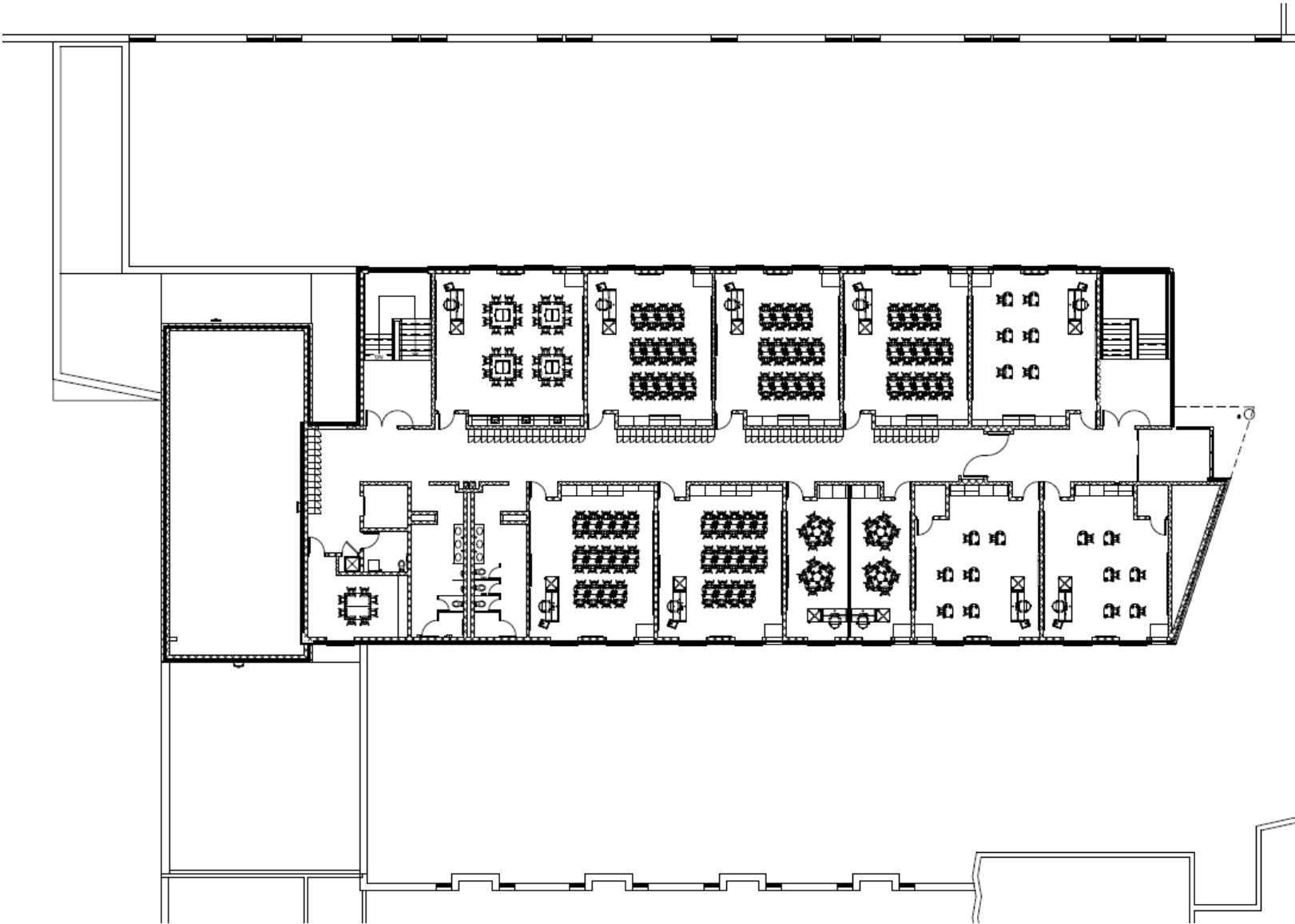


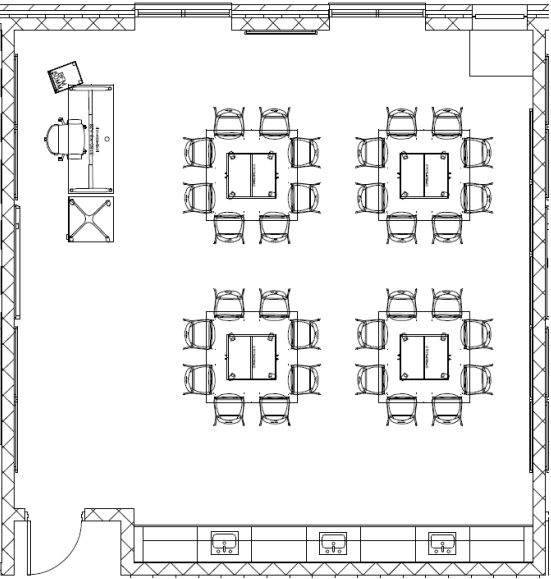
A modern office chair with a high back, armrests, and a five-star base. The chair is shown from a three-quarter view, highlighting its ergonomic design and adjustable features.

A modern office desk setup featuring a large wooden desk with a white ergonomic chair. The desk is flanked by dark grey storage units. Above the desk, there are glass-fronted cabinets and open shelving. A laptop is open on the desk, and a small lamp is visible on the right side.



INTERIOR
IMAGE
INCORPORATED





TEACHER DESK
MIEN – MY OFFICE
DESK TO COME WITH CASTERS



TEACHER CHAIR
9TO5 SEATING – NEO



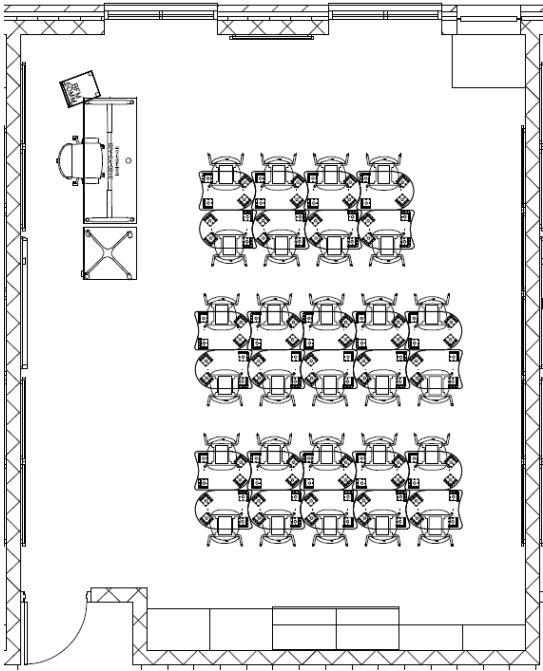
STUDENT CHAIR
MIEN – FFL



STUDENT SEATED HEIGHT TABLE
MIEN – CRE8



MOBILE PED W/ CUSHION
GLOBAL – 1900 SERIES



TEACHER DESK
MIEN – MY OFFICE
DESK TO COME WITH CASTERS



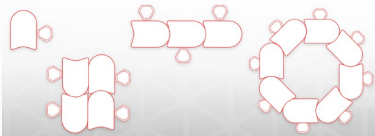
TEACHER CHAIR
9TO5 SEATING – NEO



STUDENT CHAIR
MIEN – FFL



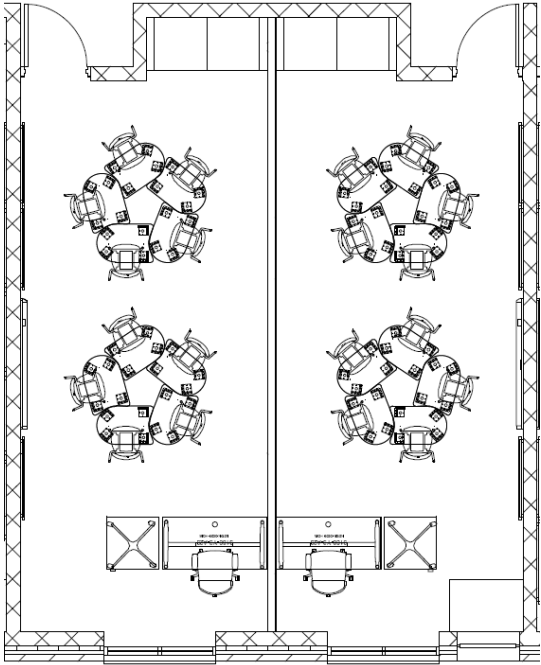
STUDENT DESK
MIEN – PAL LINC



STUDENT DESK LAYOUTS



MOBILE PED W/ CUSHION
GLOBAL – 1900 SERIES



TEACHER DESK
MIEN – MY OFFICE
DESK TO COME WITH CASTERS



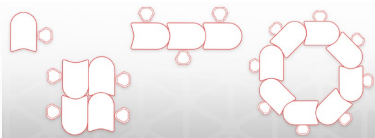
TEACHER CHAIR
9TO5 SEATING – NEO



STUDENT CHAIR
MIEN – FFL



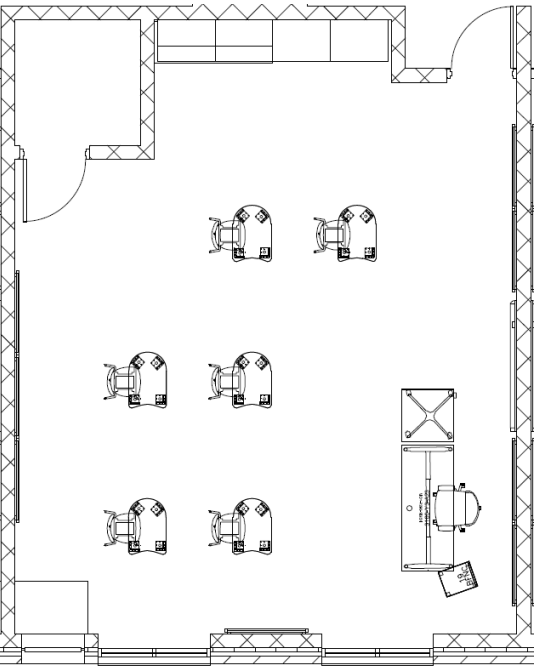
STUDENT DESK
MIEN – PAL LINC



STUDENT DESK LAYOUTS



MOBILE PED W/ CUSHION
GLOBAL – 1900 SERIES



TEACHER DESK
MIEN – MY OFFICE
DESK TO COME WITH CASTERS



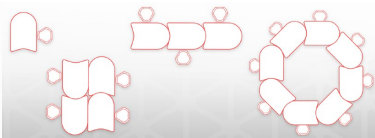
TEACHER CHAIR
9TO5 SEATING – NEO



STUDENT CHAIR
MIEN – FFL



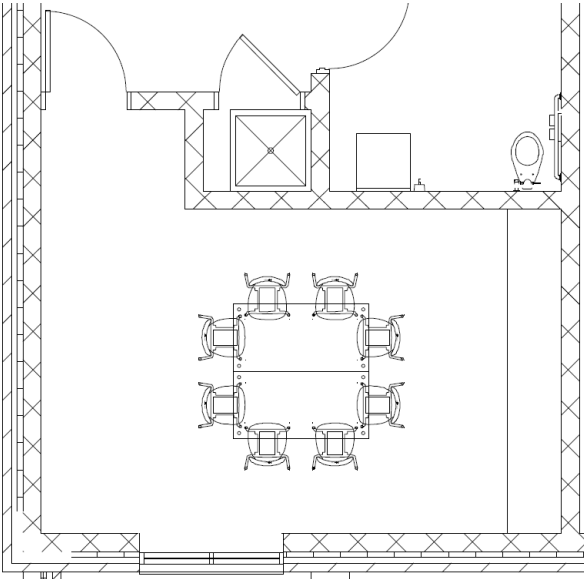
STUDENT DESK
MIEN – PAL LINC



STUDENT DESK LAYOUTS



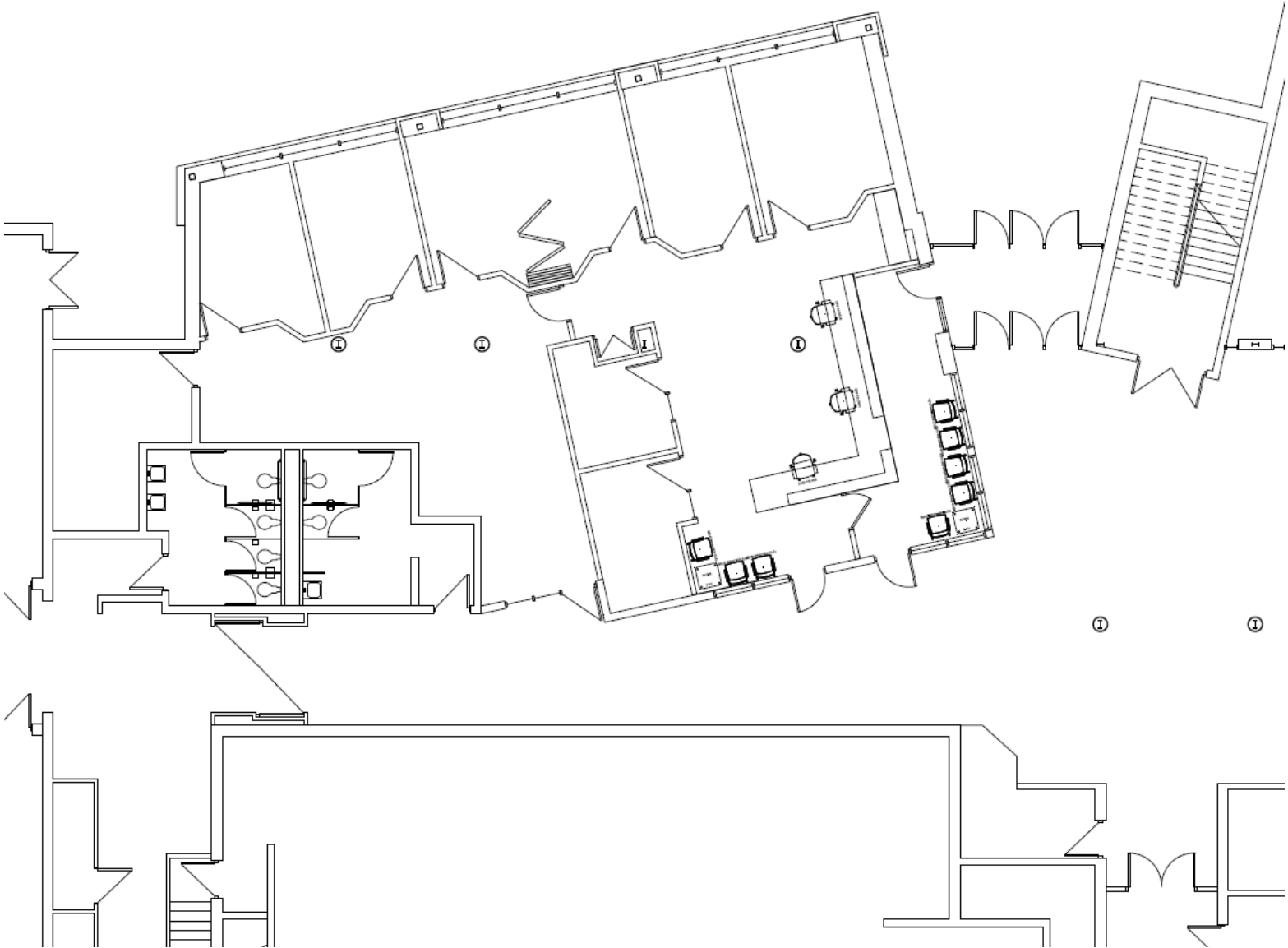
MOBILE PED W/ CUSHION
GLOBAL – 1900 SERIES

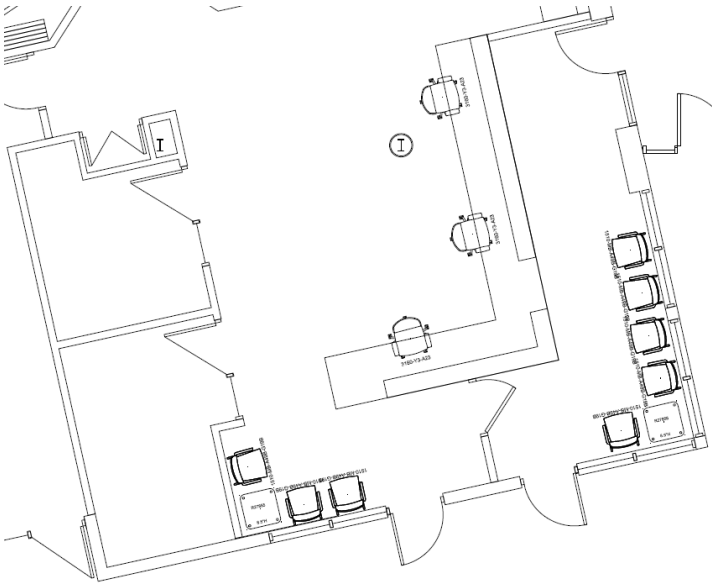


FLIP-TOP TABLE
MIEN – DIAL



CHAIR
MIEN – FFL





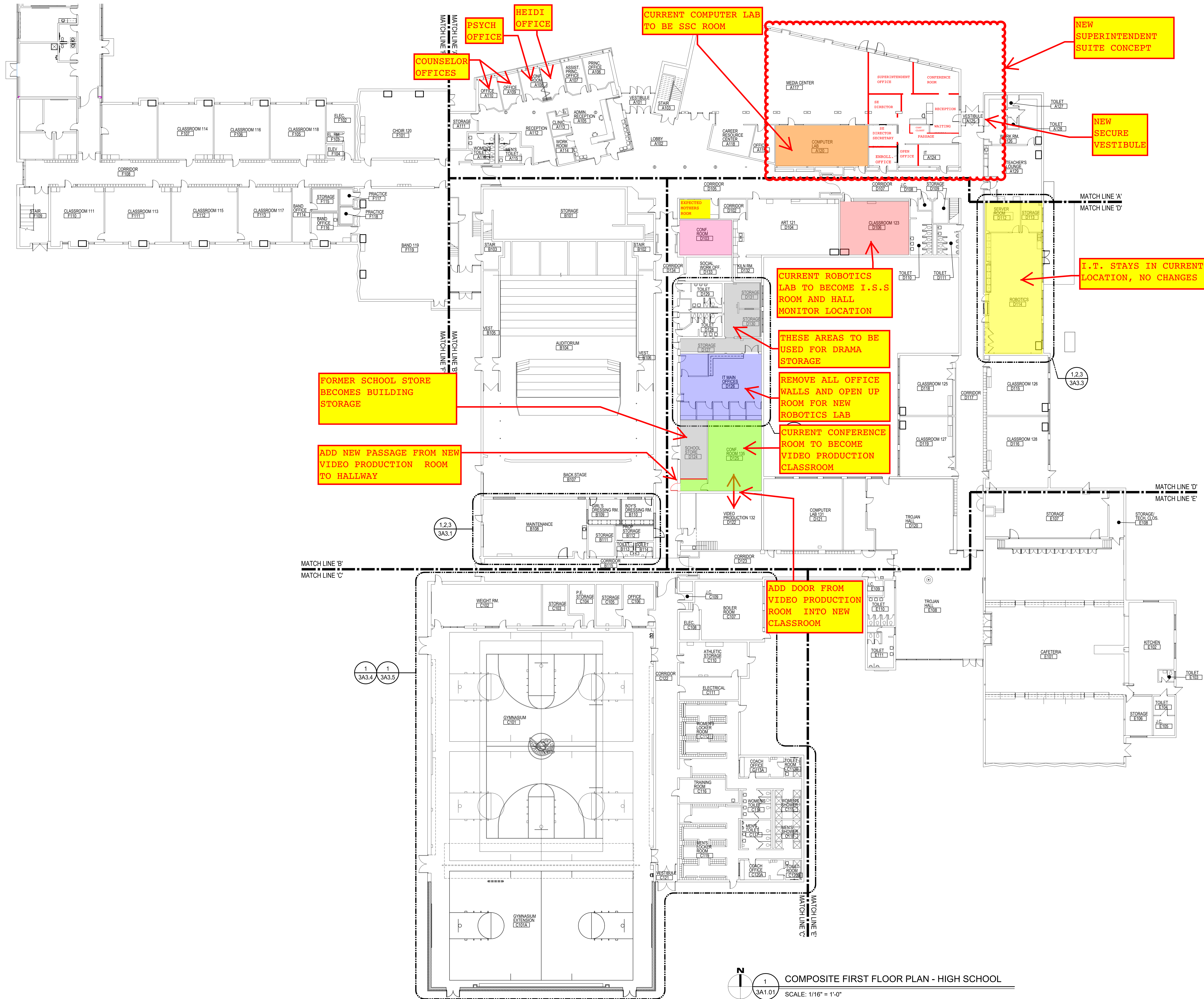
GUEST CHAIR
9TO5 SEATING – CLARY

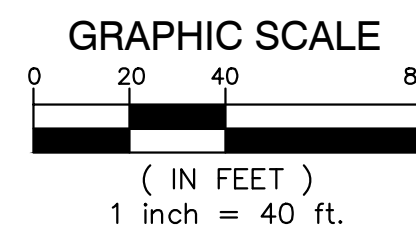


SIDE TABLE
GLOBAL – RIVER+



TASK CHAIR
9TO5 SEATING – NEO





LEGEND

----	PROPOSED WATERMAIN	●	PROPOSED SAN MANHOLE (SAN)
----	PROPOSED SANITARY	○	PROPOSED STORM MANHOLE (CM)
----	PROPOSED STORM SEWER	■	PROPOSED CATCH BASIN (CB)
----	PROPOSED GAS MAIN	☑	PROPOSED INLET (IN)
----	PROPOSED ELECTRIC	☒	PROPOSED END CONNECTION (ES)
●	PROPOSED HYDRANT	⊕	PROPOSED FIELD CATCH BASIN (FCB) W/ REVERSE COVER OR STANDPIPE (SP) W/ BAR GRATE COVER
⊗	PROPOSED GATE VALVE & WELL (GVW)		
⊗	PROPOSED TAPPING SLEEVE, VALVE & WELL (TSVW)		
	STANDARD BITUMINOUS PAVEMENT		STORM SEWER STRUCTURE
	HEAVY-DUTY BITUMINOUS PAVEMENT		SANITARY SEWER STRUCTURE
	DEEP-STRENGTH BITUMINOUS PAVEMENT		CONCRETE PAVEMENT
	CONCRETE PAVEMENT		CONCRETE SIDEWALK
	MILL PAVEMENT		UTILITY CROSSING (SEE DATA TABLE)
			CB 2 - STRUCT. TYPE
			20 - STRUCT. TYPE
			10 XXX - STRUCT. NO. - STRUCT. TYPE

REFER TO SHEET 4C1.2 FOR
DEMOLITION/CONSTRUCTION
DETAILS AND NOTES

ALLOWANCES

STORMWATER MANAGEMENT ALLOWANCE OF \$250,000. BASED ON RECENT STORMWATER ORDINANCES, STORMWATER MANAGEMENT WILL BE REQUIRED.

CURB AND GUTTER REMOVAL AND REPLACEMENT ALLOWANCE OF 115 LF.

CONCRETE WALK REMOVAL AND REPLACEMENT ALLOWANCE OF 2,510 SFT

CONCRETE INTEGRAL WALK AND CURB REMOVAL AND REPLACEMENT ALLO

WPA

WAKELY ASSOCIATES, INC.
ARCHITECTS

30500 VAN DYKE AVENUE
SUITE 209
WARREN, MICHIGAN 48093
PH: 586.573.4100
FX: 586.573.0822
www.WakelyAIA.com



**SPALDING
DECKER**
Engineering and Surveying
Excellence Since 1954

905 South Blvd. East
Rochester Hills, MI 48307
Phone: (248) 844-5400
Fax: (248) 844-5404

www.sda-eng.com
(800) 598-1600

60

CLAWSON PUBLIC SCHOOLS
2021 BOND ISSUE - BID PACK NO. 4
CLAWSON ELEMENTARY SCHOOL RENOVATION

SITE ENGINEERING PLAN

PRELIMINARY	<input checked="" type="checkbox"/>
DESIGN DEVELOPMENT	<input type="checkbox"/>
CONSTRUCTION	<input type="checkbox"/>
FINAL RECORD	<input type="checkbox"/>

DRAWN BY:	JAS
CHECKED BY:	TJS
REVISIONS:	

DATE: SEPTEMBER 10, 2000

SHEET NO.: 4C1 1

JOB NO.: 211916

SD JOB NO.:
NP21-095

OWNER

CLAWSON PUBLIC SCHOOLS
626 PHILLIPS AVE
CLAWSON, MI 48017
PHONE: (248) 655-4400

CIVIL SHEET INDEX

4C1.1 - SITE ENGINEERING PLAN
4C1.2 - SITE ENGINEERING DETAILS AND NOTES



Know what's below.
Call before you dig.



FIRST FLOOR ROOM PROGRAM:
CLASSROOMS:
Kindergarten = 6 Rooms with toilets
First Grade = 5 Rooms with toilets
Extra Classroom = 1 Room with toilet
K-5 Music = 2 Rooms
K-5 Art = 1 Room
K-5 Computer Lab = 1 Room
K-5 Media Center
K-5 Cafeteria
K-5 Gymnasium = 2 Rooms
OFFICES:
Psych = 1 Office (1 student)
Social Worker = 1 Office (5 students) 100 sf min
Speech = 1 Office (3 students) 60 sf min
OT/PT = 1 Office
Spanish = 1 Office
OTHER ROOMS:
ASD = 1 (6 students) 120 sf min
Special Ed = 3 (10 students) 200 sf min each
Reading Specialist = 3 (6 students) 120 sf min each
Calming Room
Staff Room
Staff Toilets
Student Toilets
Before/After School Care
MAIN OFFICE:
Reception
Principal Office
Assistant Principal Office
Conference Room
Clinic
Student Toilet
Staff Toilet

1
A1.01
COMPOSITE FIRST FLOOR PLAN -ELEMENTARY SCHOOL
SCALE: 1/16" = 1'-0"

BID PACK #4
PRELIMINARY DESIGN SCOPE

WA

WAKELY ASSOCIATES, INC.
ARCHITECTS

30500 VAN DYKE AVENUE
SUITE 209
WARREN, MICHIGAN 48093
PH: 586.573.4100
FX: 586.573.0822
www.WakelyAIA.com

CLAWSON PUBLIC SCHOOLS
2021 BOND ISSUE - BID PACK NO.

COMPOSITE FIRST FLOOR
PLAN
CLAWSON ELEMENTARY SCHOOL

PRELIMINARY
DESIGN DEVELOPMENT
CONSTRUCTION
FINAL RECORD

DRAWN BY: MTS
CHECKED BY: BJS

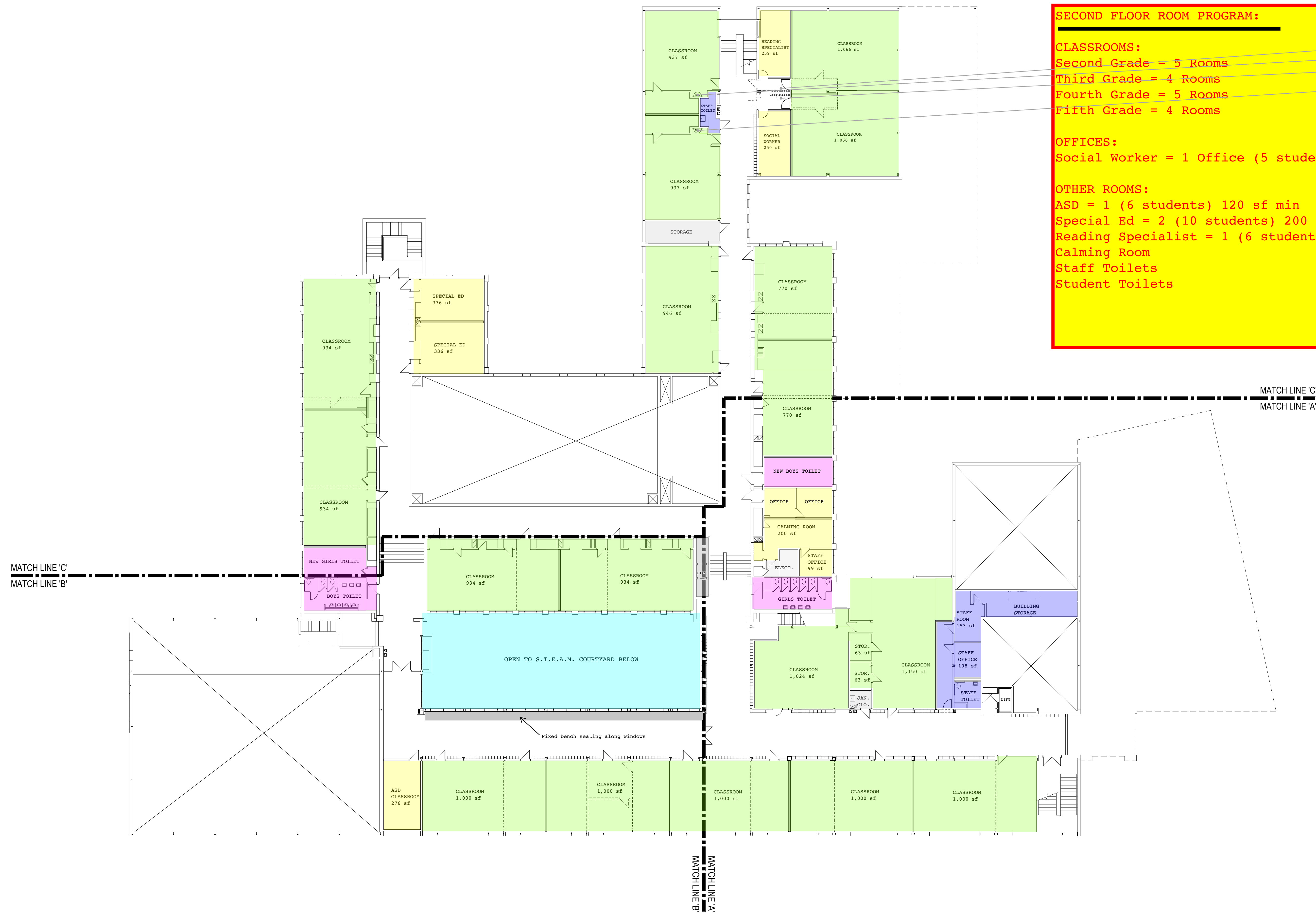
REVISIONS

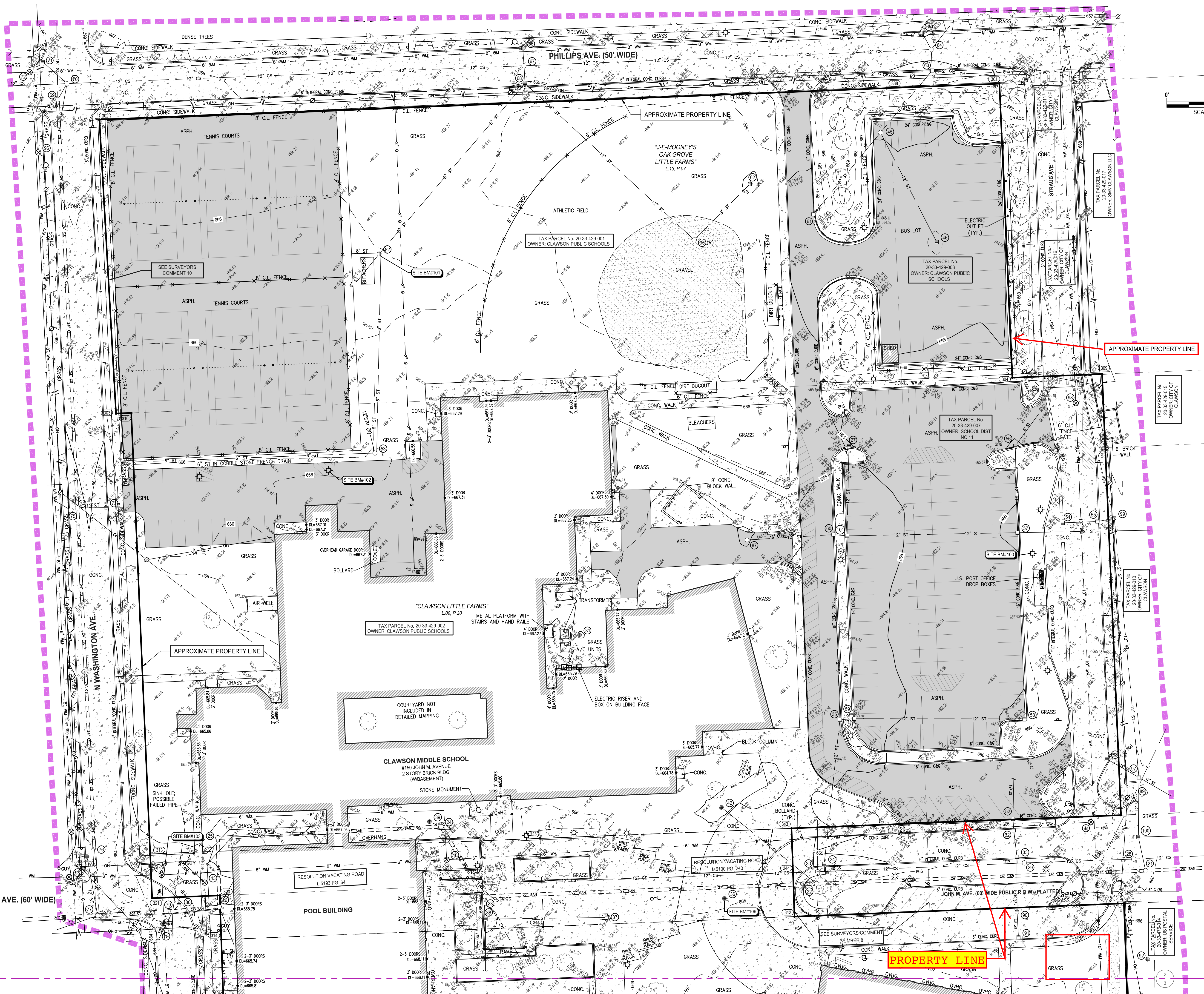
BID PACK NO. 4 SD

DATE: MAY 18, 2022
SHEET NO.

A1.01

JOB NO.
211916



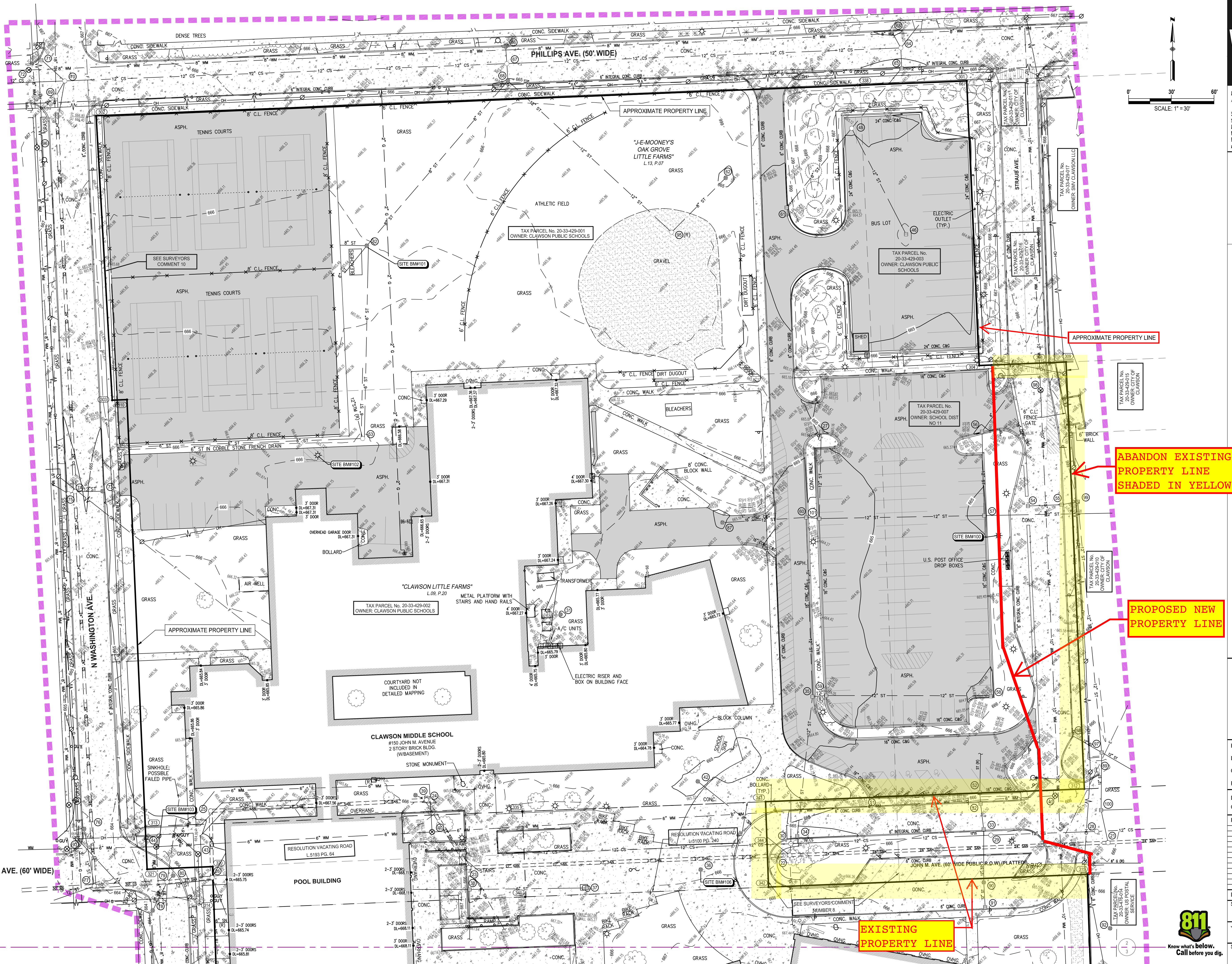


NP21-09



LEGEND

MANHOLE
CATCH BASIN
GAS SHUT OFF VALVE
VALVE BOX
GATE VALVE & WELL
WATER SHUT OFF VALVE
FIRE HYDRANT
SPRINKLER VALVE BOX
LAWN SPRINKLER HEAD
HAND HOLE
ELECTRIC RISER OR METER
TELEPHONE RISER
CABLE TV RISER
AIR CONDITION UNIT
UTILITY POLE
UTILITY POLE W/ TRANSFORMER
UTILITY POLE W/ LAMP EXTENSION
(ARROW INDICATES DIRECTION OF ARM)
LIGHT POLE
LIGHT POLE WITH LAMP EXTENSION
TRAFFIC SIGNAL
POLE W/ TRAFFIC SIGNAL (OVER ROAD)
GUY WIRE
GUY POLE
GROUND LEVEL / DECORATIVE LIGHTING
FLAG POLE
PHONE OR PHONE BOOTH
METAL OR CONC. POST
MAILBOX
SIGN
WATER FOUNTAIN
PARKING METER
BILLBOARD OR LARGE SIGN
BASKETBALL HOOP
BOULDER
STATUE OR SCULPTURE
BENCH
STUMP
DS-S DOWNSPOUT INTO STORM DRAIN
DS-G DOWNSPOUT TO GROUND
CONIFEROUS TREE
DECIDUOUS TREE
DECIDUOUS SHRUB
CONIFEROUS SHRUB
SECTION CORNER
TRAVERSE POINT
STRUCTURE NUMBER
SODA POINT NO.
SPOT ELEVATION
TC TOP OF CURB ELEVATION
GV GUTTER ELEVATION
TP TOP OF PAVEMENT ELEVATION
EM EDGE OF METAL ELEVATION
TW TOP OF WALK ELEVATION
TWALL TOP OF WALL ELEVATION
BWALL BOTTOM OF WALL ELEVATION
GR GROUND ELEVATION
UG UNDERGROUND
FO FIBER OPTIC
CONC CONCRETE
ASPH ASPHALT
FF FINISH FLOOR ELEVATION
DL DOOR LEDGE ELEVATION
F.I. FOUND IRON
F.M. FOUND MONUMENT
F.P.K. FOUND P.K. NAIL
S.I. SET IRON WISDA CAP
S.P.K. SET P.K. NAIL
S.P.K.TAG SET P.K. NAIL WISDA TAG
MAG SET MAGNETIC NAIL
MAGTAG SET MAGNETIC NAIL WISDA TAG
M MEASURED
R RECORD
C CALCULATED
INV. INVERT ELEVATION
CMP CORRUGATED METAL PIPE
G GAS
SN SANITARY SEWER (SAN)
ST STORM SEWER (STM)
WM WATERMAIN (WM)
OH OVERHEAD WIRE
STE STEAM LINE
O OIL LINE
F UG FIBER (COMM.)
E UG ELECTRIC (ELEC.)
T UG PHONE (PH)
C UG CABLE (CBL)
CHAIN LINK FENCE (CL)
WOOD FENCE
WOVEN WIRE FENCE (WW)
GUARD RAIL
EDGE OF BRUSHWOODS
CENTERLINE OF DITCH
CULVERT
BANKTOP OF SLOPE
MAJOR CONTOUR
MINOR CONTOUR
BOUNDARY LINES
ROW LINES
SECTION LINES
PROPERTY LINES
ASPHALT
CONCRETE
GRAVEL
BRICK / PAVERS
WATER



WA
WAKELY ASSOCIATES, INC.
ARCHITECTS
30500 VAN DYKE AVENUE
SUITE 204
WARREN, MICHIGAN 48093
PH: 586.573.4100
FX: 586.573.0022
www.wakelyai.com

**SPALDING
DeDECKER**
Engineering and Surveying
Excellence Since 1954
905 South Blvd. East
Rochester Hills, MI 48067
Phone: (248) 844-5400
Fax: (248) 844-5404
www.sda-eng.com
(248) 998-6100

CLAWSON PUBLIC SCHOOLS
2021 BOND ISSUE - BID PACK NO. 1
CLAWSON HIGH SCHOOL

TOPOGRAPHICAL
SURVEY (2 OF 5)

PRELIMINARY ☐
DESIGN DEVELOPMENT ☐
CONSTRUCTION ☒
FINAL RECORD ☐
DRAWN BY: JAS
CHECKED BY: TJS
REVISIONS:

NO.	DATE	DESCRIPTION
1	NOVEMBER 24, 2021	ISSUED FOR BIDDING

DATE: NOVEMBER 24, 2021
SHEET NO.: C1.5
JOB NO.: 211916
SD JOB NO.: NP21-095

811
Know what's below.
Call before you dig.