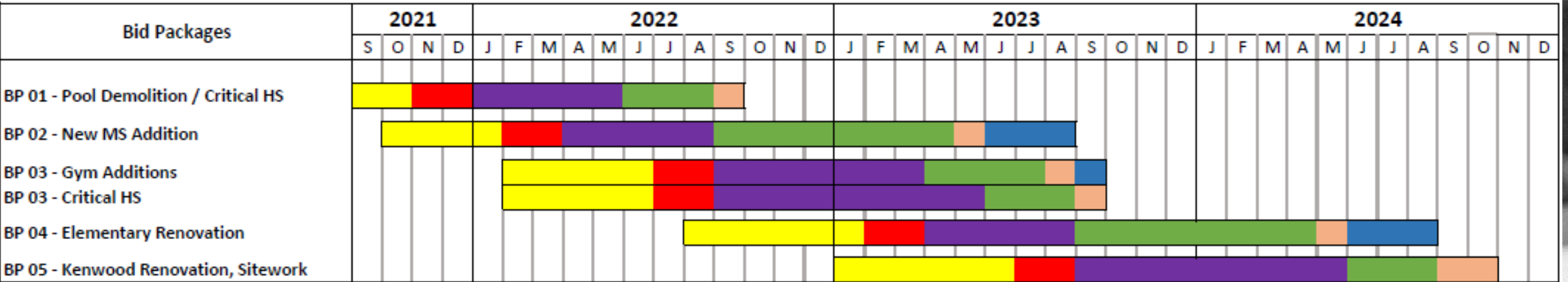


2021 BOND PROGRAM UPDATE



CLAWSON
Public Schools
Learning Today, Leading Tomorrow

OCTOBER 3, 2022



CONSTRUCTION TIMELINE

Key

█

Design

█

Bidding

█

Procurement

█

Construction

█

Punchlist, Final Clean

█

Furniture, Equipment, Move-in

AGENDA

- DESIGN
- BIDDING
- PROCUREMENT
- CONSTRUCTION
- CLOSEOUT

CLAWSON HIGH SCHOOL

BIDDING UPDATE

Bid Pack 3: Scope of Work - \$10.1M

- High School Complete Mechanical Equipment Replacement
- High School Roof Repair and Partial Replacement
- Robotics Lab
- Relocation of Oakland Schools Offices
- Facilities Maintenance Garage
- Updated Dressing Rooms & Storage for Theatre

Work Packages for Bid

- WC 01 – Demolition
- WC 02 – Earthwork & Utilities
- WC 07 – Fencing
- WC 10 – Concrete
- WC 11A – Masonry Addition
- WC 11B – Masonry Infill
- WC 12 – Structural Steel
- WC 14 – Roofing
- WC 18 - Glass / Glazing
- WC 20 – Carpentry / General Trades
- WC 21 - Walls
- WC 23 – Flooring
- WC 24 – Painting
- WC 25A – Signage
- WC 25B – Gymnasium Equipment
- WC 25C - Bleachers
- WC 27 – Mechanical
- WC 28 - Electrical

BIDDING UPDATE

BIDDER	BASE BID	Alt I - Bleachers along south wall	Voluntary Alt/Post Bid Adjustment	Base Bid + Bond + Alternates
WC 01 - Demolition				
Adamo Group	\$438,775			\$438,775
Christman Constructors	\$357,900			\$357,900

Recommendation for Award: Christman Constructors \$357,900

BIDDING UPDATE

BIDDER	BASE BID	Alt I - Bleachers along south wall	Voluntary Alt/Post Bid Adjustment	Base Bid + Bond + Alternates
WC 02 - Earthwork				
Eagle Excavation	\$345,000		\$37,000	\$382,000
Fessler & Bowman	\$415,370			\$415,370
Site Development, Inc.	\$198,000		\$70,000	\$268,000

Recommendation for Award: Site Development, Inc, \$268,000

BIDDING UPDATE

BIDDER	BASE BID	Alt I - Bleachers along south wall	Voluntary Alt/Post Bid Adjustment	Base Bid + Bond + Alternates
WC 07 - Site Construction Fencing				
RMD Holdings dba Nationwide	\$40,692			\$40,692

Recommendation for Award: RMD Holdings \$40,692

BIDDING UPDATE

BIDDER	BASE BID	Alt I - Bleachers along south wall	Voluntary Alt/Post Bid Adjustment	Base Bid + Bond + Alternates
WC 10 - Structural Concrete				
Fessler & Bowman	\$263,400			\$263,400
JJ Barney	\$172,860		\$11,220	\$184,080
McCarthy Construction	\$185,703			\$185,703
Midtown Group, LLC	\$199,900			\$199,900
Brenca	\$269,000			\$269,000

Recommendation for Award: McCarthy Construction \$185,703

BIDDING UPDATE

BIDDER	BASE BID	Alt I - Bleachers along south wall	Voluntary Alt/Post Bid Adjustment	Base Bid + Bond + Alternates
WC IIA - Masonry Addition				
Albaugh	\$457,000			\$457,000
J&J	\$237,907			\$237,907

Recommendation for Award: Re-Bid Masonry Addition Work

BIDDING UPDATE

BIDDER	BASE BID	Alt I - Bleachers along south wall	Voluntary Alt/Post Bid Adjustment	Base Bid + Bond + Alternates
WC IIB - Masonry Infill				
Albaugh	\$149,700			\$149,700
J&J	\$63,250			\$63,250
Brothers & Bricks	\$151,217			\$151,217

Recommendation for Award: J&J \$63,250

BIDDING UPDATE

BIDDER	BASE BID	Alt I - Bleachers along south wall	Voluntary Alt/Post Bid Adjustment	Base Bid + Bond + Alternates
WC 12 - Steel				
Howard Structural Steel	\$242,863		\$10,000	\$252,863
Ideal Contracting	\$356,200			\$356,200
Nelson Iron Works	\$283,830			\$283,830
Valley Steel	\$327,000			\$327,000

Recommendation for Award: Howard Structural Steel \$252,863

BIDDING UPDATE

BIDDER	BASE BID	Alt I - Bleachers along south wall	Voluntary Alt/Post Bid Adjustment	Base Bid + Bond + Alternates
WC 14 - Roofing				
Quality Roofing	\$1,497,897			\$1,497,897
Esko	\$1,565,716			\$1,565,716

Recommendation for Award: Esko \$1,497,897

BIDDING UPDATE

BIDDER	BASE BID	Alt 1 - Bleachers along south wall	Voluntary Alt/Post Bid Adjustment	Base Bid + Bond + Alternates
WC 18 - Glass & Glazing				
Curtis Glass	\$208,798			\$208,798
Edwards Glass	\$158,000			\$158,000
Envision Glass & Door	\$135,400			\$135,400
Rochester Hills Contract Glazing	\$134,800			\$134,800

Recommendation for Award: Rochester Hills Contract Glazing \$134,800

BIDDING UPDATE

BIDDER	BASE BID	Alt I - Bleachers along south wall	Voluntary Alt/Post Bid Adjustment	Base Bid + Bond + Alternates
WC 21 - Drywall, Ceilings & EIFS				
Acoustic Ceiling & Partition	\$271,740			\$271,740
Integrity Interiors	\$169,465			\$169,465
Pontiac Ceiling & Partition	\$176,500			\$176,500

Recommendation for Award: Integrity Interiors \$169,465

BIDDING UPDATE

BIDDER	BASE BID	Alt I - Bleachers along south wall	Voluntary Alt/Post Bid Adjustment	Base Bid + Bond + Alternates
WC 24 - Paint				
A&S Industrial Coatings	\$90,125			\$90,125
Conci Painting	\$171,000			\$171,000
GV Painting	\$108,350			\$108,350
R&G Painting	\$129,000			\$129,000

Recommendation for Award: A & S Industrial Coatings \$90,125

BIDDING UPDATE

BIDDER	BASE BID	Alt 1 - Bleachers along south wall	Voluntary Alt/Post Bid Adjustment	Base Bid + Bond + Alternates
WC 25A - Signage				
Universal Sign Systems	\$29,144			\$29,144

Recommendation for Award: Universal Sign Systems: \$29,144

BIDDING UPDATE

BIDDER	BASE BID	Alt I - Bleachers along south wall	Voluntary Alt/Post Bid Adjustment	Base Bid + Bond + Alternates
WC 25B - Gymnasium Equipment				
Bareman & Associates	\$50,587	-\$6,815	\$50,000	\$93,772
C&M Associates	\$53,940	-\$5,640	\$50,000	\$98,300
Holland Desk & Chaur	\$52,723	-\$5,842	\$50,000	\$96,881
On Time Installation	\$58,020		\$50,000	\$108,020

Recommendation for Award: Bareman & Associates \$93,772

BIDDING UPDATE

BIDDER	BASE BID	Alt 1 - Bleachers along south wall	Voluntary Alt/Post Bid Adjustment	Base Bid + Bond + Alternates
WC 25C - Bleachers		included in WC 25B		
Interkal		\$59,563	\$953	\$60,516

Recommendation for Award: Interkal \$60,516

BIDDING UPDATE

BIDDER	BASE BID	Alt I - Bleachers along south wall	Voluntary Alt/Post Bid Adjustment	Base Bid + Bond + Alternates
WC 27 - Mechanical				
FM Sylvan	\$4,983,000			\$4,983,000
McShane Mechanical	\$4,600,000			\$4,600,000
Miller-Boldt	\$5,850,000			\$5,850,000
Johnson & Wood	\$4,944,000			\$4,944,000

Recommendation for Award: McShane Mechanical \$4,600,000

BIDDING UPDATE

BIDDER	BASE BID	Alt 3 - Trojan Hall Patio	Alt 4 - Trojan Hall Coffered Ceiling	Alt 5 - Trojan Hall Classroom Ceiling	Voluntary Alt/Post Bid Adjustment	Base Bid + Bond + Alternates
WC 27A - Mechanical						
McShane Mechanical	\$1,550,000					\$1,550,000
Miller-Boldt	\$1,475,000					\$1,475,000
R.W. Mead	\$1,521,000					\$1,521,000
Sylvan	\$1,500,000					\$1,500,000
Quality Aire Systems	\$1,369,000					\$1,369,000

Recommendation for Award: Quality Aire Systems \$1,369,000

BIDDING UPDATE

BIDDER	BASE BID	Alt I - Bleachers along south wall	Voluntary Alt/Post Bid Adjustment	Base Bid + Bond + Alternates
WC 28 - Electrical				
Center Line Electric	\$490,000			\$490,000
Ferndale Electric Co., Inc.	\$370,380			\$370,380

Recommendation for Award: Ferndale Electric Co., Inc. \$370,380

PROGRAM BUDGET 09.15.22

			Bond Amount	Bond Amt w/ Escalation/Latest Estimate/Final Bid	VARIANCE	Estimate Date
Quantifiable Trade Cost						
Bid Pack #1			\$ 1,194,861	\$ 1,252,806	\$ 57,945	1/10/22 Post Bid
Bid Pack #2			\$ 9,110,251	\$ 9,076,725	\$ (33,526)	4/12/22 Post Bid
Bid Pack #3			\$ 12,395,257	\$ 9,220,349	\$ (3,174,908)	9/14/22 Bid Opening & reduced scope
Bid Pack #4			\$ 11,127,619	\$ 13,543,258	\$ 2,415,639	Bond App w/ Escalation (May 2022) and Accepted VA (6/15/22)
Bid Pack #5			\$ 5,880,125	\$ 5,820,553	\$ (59,572)	Bond App w/ Escalation (May 2022) and Accepted VA (6/15/22)
Bid Pack #6			\$ -	\$ 6,564,024	\$ 6,564,024	Cost reflects deferred bond scope and new scope (6/15/22). Cost includes estimate for contingencies, escalation to Summer 2024, GCs, fees, and insurance.
Construction Costs/Design and Bid Contingencies Subtotal:			\$ 39,708,114	\$ 45,477,715	\$ 5,769,601	
Construction Contingency:			\$ 1,073,192	\$ 1,073,192	\$ -	
Construction Trade Costs Total:			\$ 40,781,306	\$ 46,550,907	\$ 5,769,601	
Christman Staff/GCs:			\$ 1,576,820	\$ 1,576,820	\$ -	
Christman Fee:			\$ 917,579	\$ 917,579	\$ -	
Wakely Fee:			\$ 2,283,753	\$ 2,283,753	\$ -	
Design Reimbursables:			\$ 176,600	\$ 176,600	\$ -	
Design/CM Fees Total:			\$ 4,954,752	\$ 4,954,752	\$ -	
Commissioning:			\$ 158,484	\$ 158,484	\$ -	
Abatement:					\$ -	
Builder's Risk:			\$ 236,532	\$ 30,000	\$ (206,532)	Updated 3/18/22
Appliances/Kitchen Equipment Allowance:			\$ 168,926	\$ 168,926	\$ -	
Moving Costs:			\$ 75,000	\$ 75,000	\$ -	
Additional Classroom Furniture Allowance:			\$ 500,000	\$ 1,000,000	\$ 500,000	
Total Owner Managed Costs:			\$ 1,138,942	\$ 1,432,410	\$ 293,468	
Technology:			\$ 5,600,000	\$ 5,600,000	\$ -	
Buses:			\$ 600,000	\$ 404,820	\$ (195,180)	
Instruments:			\$ 200,000	\$ 141,593	\$ (58,407)	Updated 07/18/22
Other School Equipment TBD:			\$ 800,000	\$ 300,000	\$ (500,000)	
Bond Proceeds:			\$ 805,000	\$ -	\$ (805,000)	
Other Bond Costs Total:			\$ 8,005,000	\$ 6,446,413	\$ (1,558,587)	
Total Project Costs			\$ 54,880,000	\$ 59,384,483	\$ 4,504,483	8%

PROGRAM BUDGET 10.03.22

			Bond Amount	Bond Amt w/ Escalation/Latest Estimate/Final Bid	VARIANCE	Estimate Date
Quantifiable Trade Cost						
Bid Pack #1			\$ 1,194,861	\$ 1,252,806	\$ 57,945	1/10/22 Post Bid
Bid Pack #2			\$ 9,110,251	\$ 9,076,725	\$ (33,526)	4/12/22 Post Bid
Bid Pack #3			\$ 12,395,257	\$ 9,410,217	\$ (2,985,040)	9/27/22 Post Bid with future rebid of WC IIA, 20, 23
Bid Pack #4			\$ 11,127,619	\$ 14,084,664	\$ 2,957,045	Initial 10/03/22 SD Estimate
Bid Pack #5			\$ 5,880,125	\$ 5,820,553	\$ (59,572)	Bond App w/ Escalation (May 2022) and Accepted VA (6/15/22)
Bid Pack #6			\$ -	\$ 6,564,024	\$ 6,564,024	Cost reflects deferred bond scope and new scope (6/15/22). Cost includes estimate for contingencies, escalation to Summer 2024, GCs, fees, and insurance.
Construction Costs/Design and Bid Contingencies Subtotal:			\$ 39,708,114	\$ 46,208,989	\$ 6,500,875	
Construction Contingency:			\$ 1,073,192	\$ 1,073,192	\$ -	
Construction Trade Costs Total:			\$ 40,781,306	\$ 47,282,181	\$ 6,500,875	
Christman Staff/GCs:			\$ 1,576,820	\$ 1,576,820	\$ -	
Christman Fee:			\$ 917,579	\$ 917,579	\$ -	
Wakely Fee:			\$ 2,283,753	\$ 2,283,753	\$ -	
Design Reimbursables:			\$ 176,600	\$ 176,600	\$ -	
Design/CM Fees Total:			\$ 4,954,752	\$ 4,954,752	\$ -	
Commissioning:			\$ 158,484	\$ 158,484	\$ -	
Abatement:					\$ -	
Builder's Risk:			\$ 236,532	\$ 30,000	\$ (206,532)	Updated 3/18/22
Appliances/Kitchen Equipment Allowance:			\$ 168,926	\$ 168,926	\$ -	
Moving Costs:			\$ 75,000	\$ 75,000	\$ -	
Additional Classroom Furniture Allowance:			\$ 500,000	\$ 1,000,000	\$ 500,000	
Total Owner Managed Costs:			\$ 1,138,942	\$ 1,432,410	\$ 293,468	
Technology:			\$ 5,600,000	\$ 5,600,000	\$ -	
Buses:			\$ 600,000	\$ 404,820	\$ (195,180)	
Instruments:			\$ 200,000	\$ 141,593	\$ (58,407)	Updated 07/18/22
Other School Equipment TBD:			\$ 800,000	\$ 300,000	\$ (500,000)	
Bond Proceeds:			\$ 805,000	\$ -	\$ (805,000)	
Other Bond Costs Total:			\$ 8,005,000	\$ 6,446,413	\$ (1,558,587)	
Total Project Costs			\$ 54,880,000	\$ 60,115,756	\$ 5,235,756	10%



Open Discussion & Input