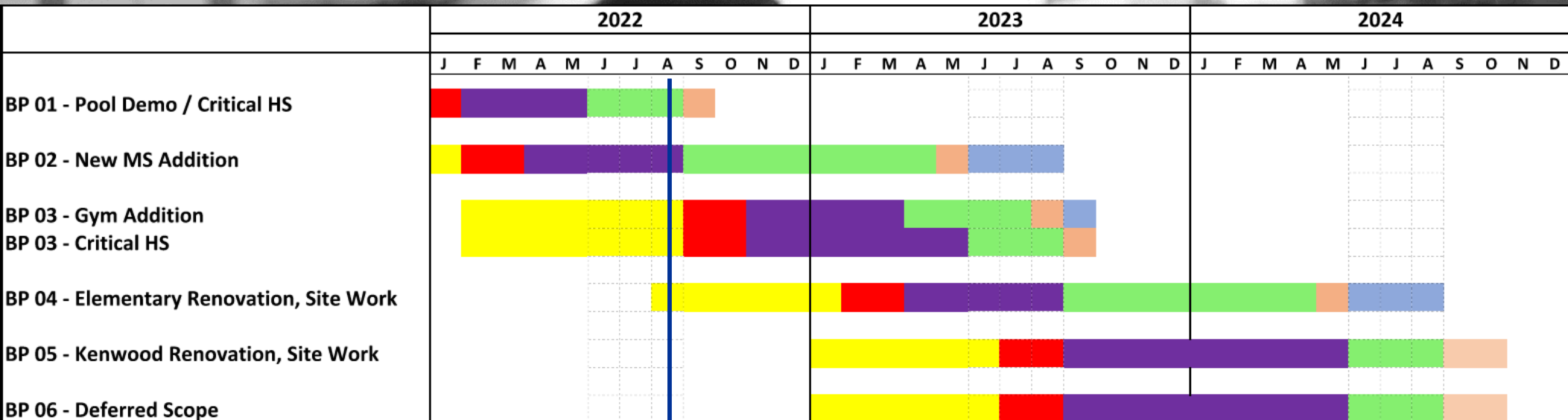


# 2021 BOND PROGRAM UPDATE



AUGUST 15, 2022



# CONSTRUCTION TIMELINE

## Key

- Design
- Bidding
- Procurement
- Construction
- Punchlist, Final Clean
- Furniture, Equipment, Move-in



## AGENDA

- 
- **BIDDING/BUDGET**
  - **DESIGN**
  - **PROCUREMENT**
  - **CONSTRUCTION**
  - **CLOSEOUT**



## DESIGN UPDATE

**Bid Package 3 – High School Gym Addition & Critical High School Infrastructure Replacement out for bid by August 19.**

**BP 3 Bids Due: August 31, 2022**

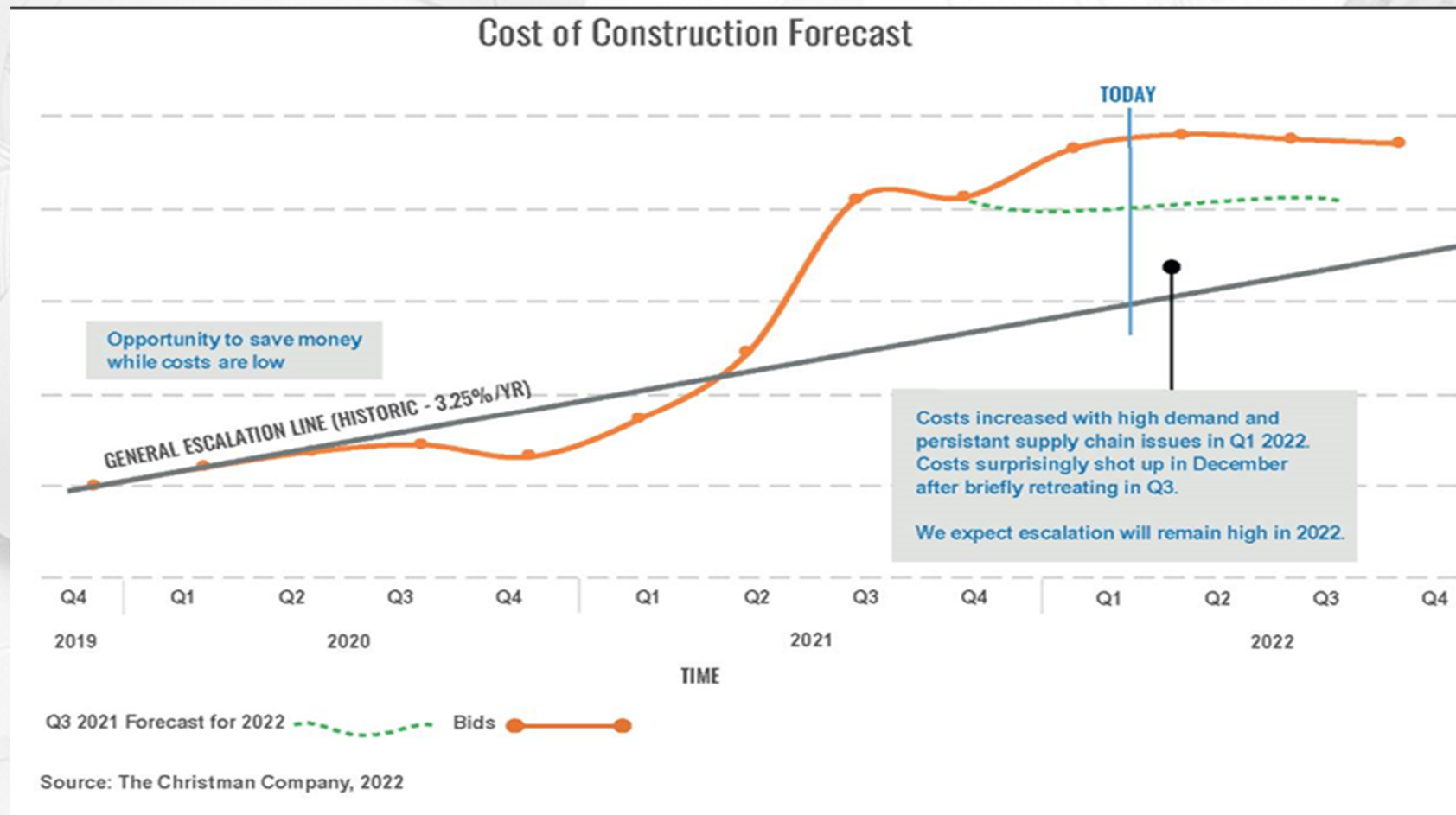
**BP 3 Recommendation To Board: October 3, 2022**

**Bid Package 4 – Middle School to Elementary Conversion**

**BP4 – Initial Schematic Estimate Due: October 3, 2022**



# BIDDING/BUDGET UPDATE - ESCALATION FORECAST

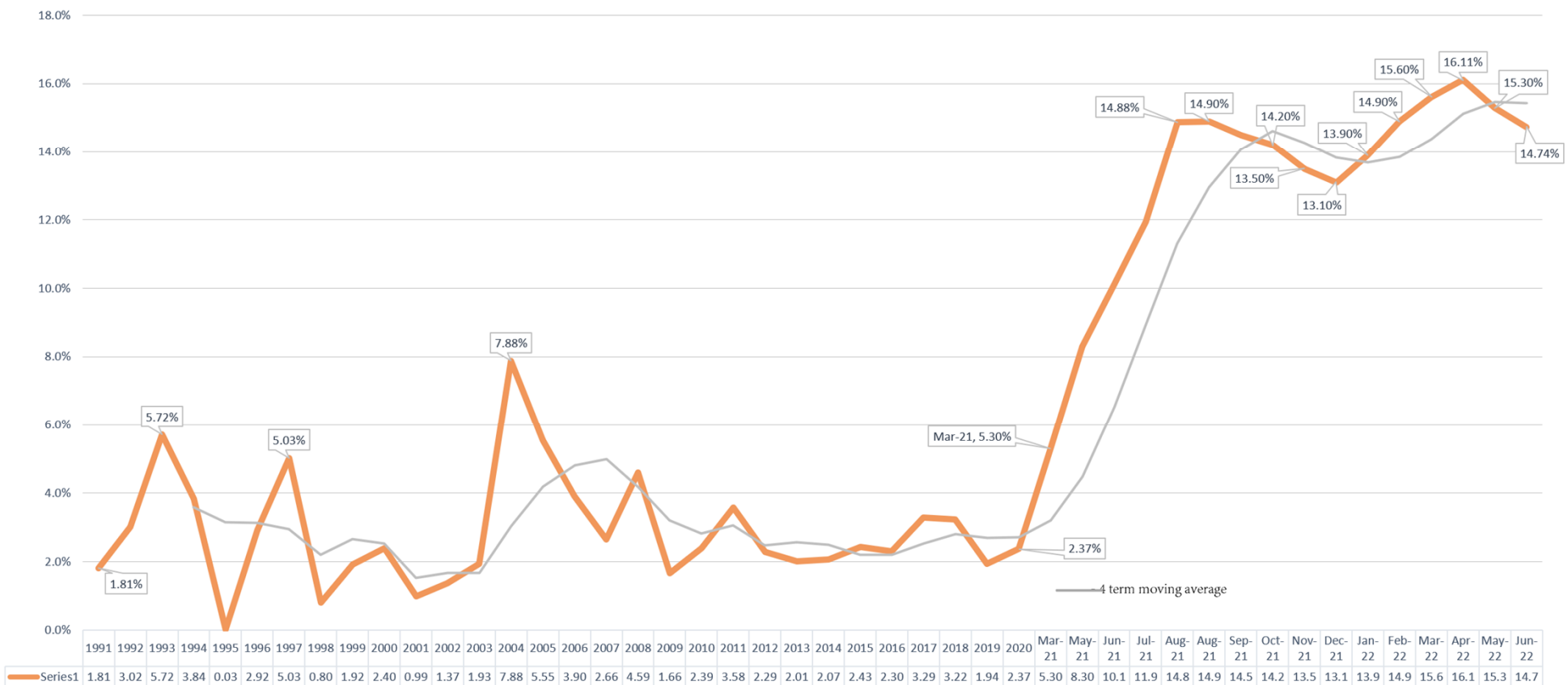


# BIDDING/BUDGET UPDATE - BUILDING COST INDEX

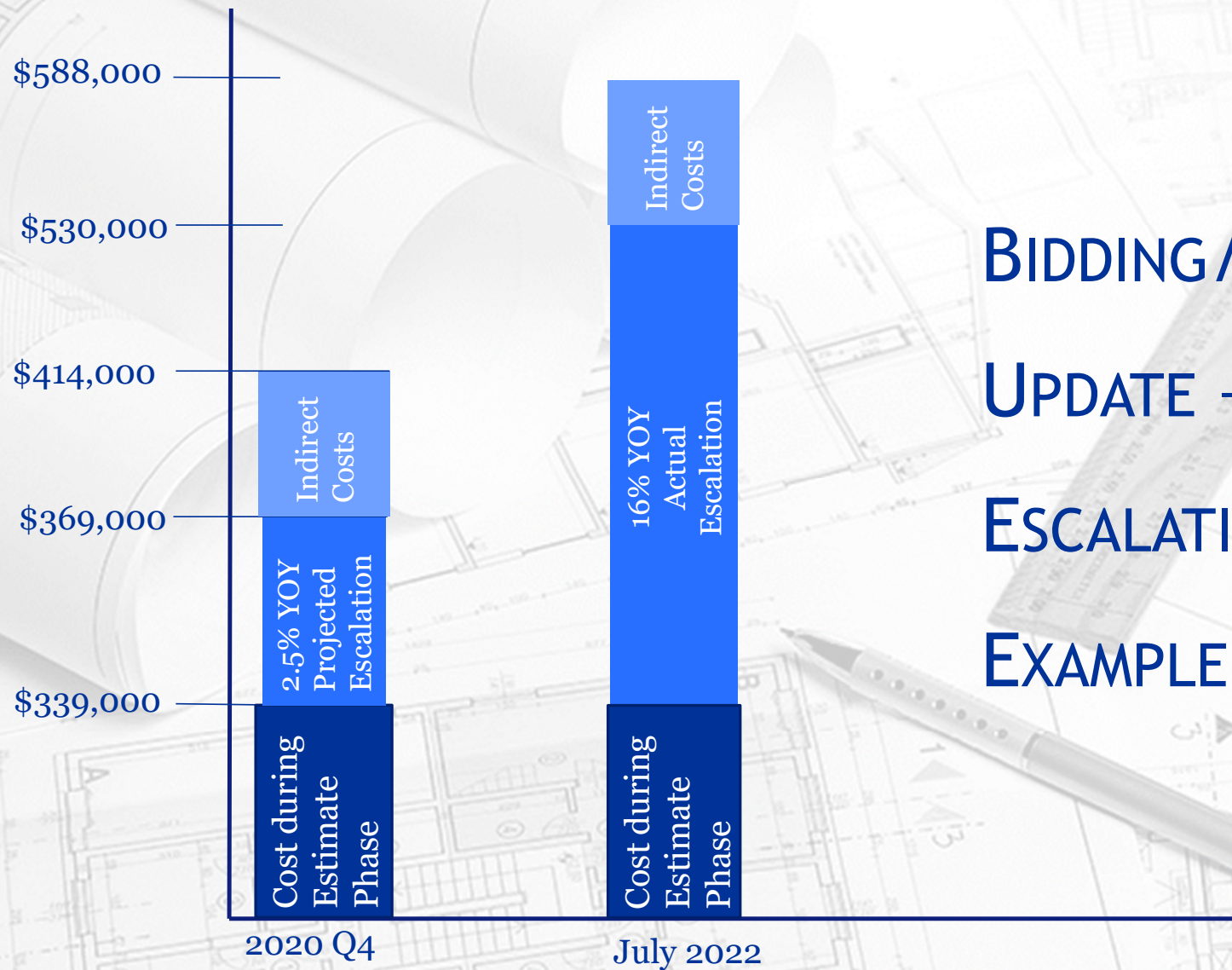
**HOW ENR BUILDS THE INDEX:** 68.38 hours of skilled labor at the 20-city average of bricklayers, carpenters and structural ironworkers rates, plus 25 cwt of standard structural steel shapes at the mill price prior to 1996 and the fabricated 20-city price from 1996, plus 1.128 tons of portland cement at the 20-city price, plus 1,088 board ft of 2 x 4 lumber at the 20-city price.



## National Building Cost Index (BCI) - % Change Annually



# BIDDING / BUDGET UPDATE - COST ESCALATION EXAMPLE





# CURRENT PROGRAM BUDGET

			Bond Amount	Bond Amt w/ Escalation/Latest Estimate/Final Bid	VARIANCE	Estimate Date
<b>Quantifiable Trade Cost</b>						
Bid Pack #1			\$ 1,194,861	\$ 1,252,806	\$ 57,945	1/10/22 Post Bid
Bid Pack #2			\$ 9,110,251	\$ 9,076,725	\$ (33,526)	4/12/22 Post Bid
Bid Pack #3			\$ 12,395,257	\$ 10,369,783	\$ (2,025,474)	SD Estimate dated 5/31/22 w/ 6/15/22 Accepted VA
Bid Pack #4			\$ 11,127,619	\$ 13,543,258	\$ 2,415,639	Bond App w/ Escalation (May 2022) and Accepted VA (6/15/22)
Bid Pack #5			\$ 5,880,125	\$ 5,820,553	\$ (59,572)	Bond App w/ Escalation (May 2022) and Accepted VA (6/15/22)
Bid Pack #6			\$ -	\$ 6,564,024	\$ 6,564,024	Cost reflects deferred bond scope and new scope (6/15/22). Cost includes estimate for contingencies, escalation to Summer 2024, GCs, fees, and insurance.
<b>Construction Costs/Design and Bid Contingencies Subtotal:</b>			\$ 39,708,114	\$ 46,627,149	\$ 6,919,035	
Construction Contingency:			\$ 1,073,192	\$ 1,073,192	\$ -	
<b>Construction Trade Costs Total:</b>			\$ 40,781,306	\$ 47,700,341	\$ 6,919,035	
Christman Staff/GCs:			\$ 1,576,820	\$ 1,576,820	\$ -	
Christman Fee:			\$ 917,579	\$ 917,579	\$ -	
Wakely Fee:			\$ 2,283,753	\$ 2,283,753	\$ -	
Design Reimbursables:			\$ 176,600	\$ 176,600	\$ -	
<b>Design/CM Fees Total:</b>			\$ 4,954,752	\$ 4,954,752	\$ -	
Commissioning:			\$ 158,484	\$ 158,484	\$ -	
Abatement:					\$ -	
Builder's Risk:			\$ 236,532	\$ 30,000	\$ (206,532)	Updated 3/18/22
Appliances/Kitchen Equipment Allowance:			\$ 168,926	\$ 168,926	\$ -	
Moving Costs:			\$ 75,000	\$ 75,000	\$ -	
Additional Classroom Furniture Allowance:			\$ 500,000	\$ 1,000,000	\$ 500,000	
<b>Total Owner Managed Costs:</b>			\$ 1,138,942	\$ 1,432,410	\$ 293,468	
Technology:			\$ 5,600,000	\$ 5,600,000	\$ -	
Buses:			\$ 600,000	\$ 404,820	\$ (195,180)	
Instruments:			\$ 200,000	\$ 150,000	\$ (50,000)	
Other School Equipment TBD:			\$ 800,000	\$ 300,000	\$ (500,000)	
Bond Proceeds:			\$ 805,000	\$ -	\$ (805,000)	
<b>Other Bond Costs Total:</b>			\$ 8,005,000	\$ 6,454,820	\$ (1,550,180)	
<b>Total Project Costs</b>			\$ 54,880,000	\$ 60,542,323	\$ 5,662,323	10%



# PROCUREMENT UPDATE

- Trojan Hall New RTU-16 has been back ordered, delivery has been pushed back to November 2022.
- Middle School Kick Off meeting held 08.09.22
- Middle School Roofing Insulation is on site.
- Middle School Deep Utility material is produced and awaits delivery.
- Middle School Finishes have been ordered.
- Middle School Steel is Fabricated to the greatest extent possible and in contractor's yard.



# CONSTRUCTION UPDATE

- Week of August 8:
  - Computer Lab Ceiling Install
  - Mechanical Equipment Commissioning
  - Trojan Hall Lighting
  - Pool Demo and Haul Out
- Week of August 15:
  - Door & Hardware Install
  - Inspections – State Fire Marshal & State Building Inspector
  - Pool Backfill
- Week of August 22:
  - Furniture Move In
  - Deep Utilities under new Middle School start





# CONSTRUCTION UPDATE





**Open Discussion & Input**